

Parts List

Ref	Var	IPN	Description
BATT_NEG		356-01070-00	Spring Spkr Cntct Probe
BATT_DATA		356-01070-00	Spring Spkr Cntct Probe
BATT_POS		356-01070-00	Spring Spkr Cntct Probe
C101		018-14100-00	Cap 0603 1n 50v X7r ±10%
C102		018-12150-10	Cap 0603 15p 50v NPO ±1%
C103		018-14100-00	Cap 0603 1n 50v X7r ±10%
C104		018-16100-00	Cap 0603 100n 16v x7r + - 10%
C105		018-16100-00	Cap 0603 100n 16v x7r + - 10%
C106		018-14100-00	Cap 0603 1n 50v X7r ±10%
C107		018-12100-10	Cap 0603 10p 50v NPO±0.1
C108		018-13150-00	Cap 0603 150p 50v NPO ±5%
C109		018-13470-00	Cap 0603 470p 50v X7r±10%
C110		018-12100-10	Cap 0603 10p 50v NPO±0.1
C111		018-12270-10	Cap 0603 27p 50v NPO ±1%
C112		018-13150-00	Cap 0603 150p 50v NPO ±5%
C114		018-13270-00	Cap 0603 270p 50v NPO±5%
C115		018-13470-00	Cap 0603 470p 50v X7r±10%
C116		018-13100-10	Cap 0603 100p 50v NPO±1%
C117		018-15100-00	Cap 0603 10n 50v X7r ±10%
C118		018-12470-10	Cap 0603 47p 50v NPO ±1%
C119		018-13150-00	Cap 0603 150p 50v NPO ±5%
C120		015-23470-08	Cap Cer 0805 470p 10% X7r 50v
C121		018-16100-00	Cap 0603 100n 16v x7r + - 10%
C122		018-15100-00	Cap 0603 10n 50v X7r ±10%
C123		015-22330-05	Cap Cer 0805 33p±0.1pf 200v
C124		015-22330-05	Cap Cer 0805 33p±0.1pf 200v
C125		018-15100-00	Cap 0603 10n 50v X7r ±10%
C126		018-14100-00	Cap 0603 1n 50v X7r ±10%
C127		018-14470-00	Cap 0603 4n7 50v X7r±10%
C128		018-13220-00	Cap 0603 220p 50v NPO±5%
C129		018-13220-00	Cap 0603 220p 50v NPO±5%
C130		015-07220-08	Cap Cer 1206 2u2 16v X7r
C131		018-13150-00	Cap 0603 150p 50v NPO ±5%
C132		015-25100-08	Cap Cer 0805 10n 10% X7r 50v
C133		015-23100-01	Cap Cer 0805 100p 5% NPO 50v
C136		018-15100-00	Cap 0603 10n 50v X7r ±10%
C140		018-16100-00	Cap 0603 100n 16v x7r + - 10%
C144		015-21820-05	Cap Cer 0805 8p2±0.1pf 200v
C145		015-21330-05	Cap Cer 0805 3p3±0.1pf 200v
C146		015-22220-05	Cap 0805 22p 1% 200v
C147		015-22220-05	Cap 0805 22p 1% 200v
C148		018-11560-10	Cap 0603 5p6 50v NPO±0.1p
C149		018-11100-10	Cap 0603 1p0 50v NPO±0.1p
C150		018-13100-10	Cap 0603 100p 50v NPO±1%
C151		015-22100-05	Cap Cer 0805 10p +0.1pf 200v
C152		018-13100-10	Cap 0603 100p 50v NPO±1%
C155		018-13100-10	Cap 0603 100p 50v NPO±1%
C156		018-15100-00	Cap 0603 10n 50v X7r ±10%
C157		018-12680-10	Cap 0603 68p 50v NPO ±1%
C160		015-22150-05	Cap 0805 15p 1% 200v
C161		018-14100-00	Cap 0603 1n 50v X7r ±10%
C162		015-21470-05	Cap Cer 0805 4p7±0.1pf 200v
C164		015-21560-05	Cap Cer 0805 5p6 ±0.1pf 200v
C165		015-21330-05	Cap Cer 0805 3p3±0.1pf 200v
C166		015-21270-05	Cap Cer 0805 2p7 ±0.1pf 200v
C167		015-22220-05	Cap 0805 22p 1% 200v
C168		015-21470-05	Cap Cer 0805 4p7±0.1pf 200v
C170		015-21330-05	Cap Cer 0805 3p3±0.1pf 200v
C172		015-21390-05	Cap Cer 0805 3p9±0.1pf 200v
C173		015-21220-05	Cap Cer 0805 2p2 ±0.1pf 200v
C174		018-16100-00	Cap 0603 100n 16v x7r + - 10%
C200		018-16100-00	Cap 0603 100n 16v x7r + - 10%
C201		018-16100-00	Cap 0603 100n 16v x7r + - 10%
C202		015-07470-10	Cap Cer 1206 4u7 X7r 16v
C203		018-16100-00	Cap 0603 100n 16v x7r + - 10%
C204		018-16100-00	Cap 0603 100n 16v x7r + - 10%
C205		018-16100-00	Cap 0603 100n 16v x7r + - 10%
C206		018-13680-00	Cap 0603 680p 50v X7r±10%
C208		018-13680-00	Cap 0603 680p 50v X7r±10%
C209		018-16100-00	Cap 0603 100n 16v x7r + - 10%
C210		018-12680-10	Cap 0603 68p 50v NPO ±1%
C212		015-27100-08	Cap Cer 0805 X7R 1uF 16V 10%
C213		031-16100-00	Cap 0402 100n 10V X5R +-10%
C215		031-16100-00	Cap 0402 100n 10V X5R +-10%
C216		031-16100-00	Cap 0402 100n 10V X5R +-10%
C217		018-16100-00	Cap 0603 100n 16v x7r + - 10%
C219		018-16100-00	Cap 0603 100n 16v x7r + - 10%

Ref	Var	IPN	Description
C220		018-16100-00	Cap 0603 100n 16v x7r + - 10%
C221		018-16100-00	Cap 0603 100n 16v x7r + - 10%
C222		018-13100-10	Cap 0603 100p 50v NPO±1%
C223		018-16100-00	Cap 0603 100n 16v x7r + - 10%
C224		015-27470-05	Cap Cer 0805 X5R 4u7 16v 10%
C225		018-16100-00	Cap 0603 100n 16v x7r + - 10%
C226		018-16100-00	Cap 0603 100n 16v x7r + - 10%
C227		031-16100-00	Cap 0402 100n 10V X5R +-10%
C228		015-07220-08	Cap Cer 1206 2u2 16v X7r
C230		018-13150-00	Cap 0603 150p 50v NPO ±5%
C233		018-16100-00	Cap 0603 100n 16v x7r + - 10%
C234		031-16100-00	Cap 0402 100n 10V X5R +-10%
C235		018-16100-00	Cap 0603 100n 16v x7r + - 10%
C236		018-16100-00	Cap 0603 100n 16v x7r + - 10%
C237		018-14100-00	Cap 0603 1n 50v X7r ±10%
C238		031-16100-00	Cap 0402 100n 10V X5R +-10%
C240		018-16100-00	Cap 0603 100n 16v x7r + - 10%
C241		018-13470-00	Cap 0603 470p 50v X7r±10%
C242		018-15470-00	Cap 0603 47n 16v X7r±10%
C245		031-16100-00	Cap 0402 100n 10V X5R +-10%
C400		018-11560-10	Cap 0603 5p6 50v NPO±0.1p
C401		018-11470-10	Cap 0603 4p7 50v NPO±0.1p
C402		018-11330-10	Cap 0603 3p3 50v NPO±0.1p
C403		018-12390-10	Cap 0603 39p 50v NPO ±1%
C404		018-15100-00	Cap 0603 10n 50v X7r ±10%
C405		018-11560-10	Cap 0603 5p6 50v NPO±0.1p
C406		018-11330-10	Cap 0603 3p3 50v NPO±0.1p
C408		018-12100-10	Cap 0603 10p 50v NPO±0.1
C409		018-15100-00	Cap 0603 10n 50v X7r ±10%
C410		018-16100-00	Cap 0603 100n 16v x7r + - 10%
C411		018-15100-00	Cap 0603 10n 50v X7r ±10%
C412		018-16100-00	Cap 0603 100n 16v x7r + - 10%
C413		018-14100-00	Cap 0603 1n 50v X7r ±10%
C414		018-12270-10	Cap 0603 27p 50v NPO ±1%
C415		018-15150-00	Cap 0603 15n 50v X7r ±10%
C416		018-12390-10	Cap 0603 39p 50v NPO ±1%
C417		018-16100-00	Cap 0603 100n 16v x7r + - 10%
C418		018-16100-00	Cap 0603 100n 16v x7r + - 10%
C419		018-16100-00	Cap 0603 100n 16v x7r + - 10%
C420		018-11560-10	Cap 0603 5p6 50v NPO±0.1p
C421		018-15100-00	Cap 0603 10n 50v X7r ±10%
C422		018-11470-10	Cap 0603 4p7 50v NPO±0.1p
C423		018-15100-00	Cap 0603 10n 50v X7r ±10%
C424		018-11330-10	Cap 0603 3p3 50v NPO±0.1p
C425		018-12330-10	Cap 0603 33p 50v NPO ±1%
C426		018-16100-00	Cap 0603 100n 16v x7r + - 10%
C427		018-13100-10	Cap 0603 100p 50v NPO±1%
C428		018-13100-10	Cap 0603 100p 50v NPO±1%
C429		018-12390-10	Cap 0603 39p 50v NPO ±1%
C430		018-16100-00	Cap 0603 100n 16v x7r + - 10%
C431		018-16100-00	Cap 0603 100n 16v x7r + - 10%
C432		018-11330-10	Cap 0603 3p3 50v NPO±0.1p
C433		018-11180-10	Cap 0603 1p8 50v NPO±0.1p
C434		018-15100-00	Cap 0603 10n 50v X7r ±10%
C435		018-12390-10	Cap 0603 39p 50v NPO ±1%
C436		018-11470-10	Cap 0603 4p7 50v NPO±0.1p
C437		018-11330-10	Cap 0603 3p3 50v NPO±0.1p
C438		018-11330-10	Cap 0603 3p3 50v NPO±0.1p
C439		018-11470-10	Cap 0603 4p7 50v NPO±0.1p
C440		018-15100-00	Cap 0603 10n 50v X7r ±10%
C441		018-11560-10	Cap 0603 5p6 50v NPO±0.1p
C442		018-12100-10	Cap 0603 10p 50v NPO±0.1
C443		018-12100-10	Cap 0603 10p 50v NPO±0.1
C444		018-15100-00	Cap 0603 10n 50v X7r ±10%
C445		018-15100-00	Cap 0603 10n 50v X7r ±10%
C446		018-15100-00	Cap 0603 10n 50v X7r ±10%
C448		018-13100-10	Cap 0603 100p 50v NPO±1%
C449		018-15100-00	Cap 0603 10n 50v X7r ±10%
C450		018-13100-10	Cap 0603 100p 50v NPO±1%
C451		018-11820-10	Cap 0603 8p2 50v NPO±0.1p
C452		018-16100-00	Cap 0603 100n 16v x7r + - 10%
C454		018-16100-00	Cap 0603 100n 16v x7r + - 10%
C455		018-15100-00	Cap 0603 10n 50v X7r ±10%
C456		018-12220-10	Cap 0603 22p 50v NPO ±1%
C461		018-15100-00	Cap 0603 10n 50v X7r ±10%
C462		018-11100-10	Cap 0603 1p0 50v NPO±0.1p
C463		018-16100-00	Cap 0603 100n 16v x7r + - 10%

Ref	Var	IPN	Description
C464		031-13150-05	Cap Cer 0402 150p 50V COG 5%
C465		031-13150-05	Cap Cer 0402 150p 50V COG 5%
C466		018-13270-00	Cap 0603 270p 50v NPO±5%
C467		018-11100-10	Cap 0603 1p0 50v NPO±0.1p
C468		018-12220-10	Cap 0603 22p 50v NPO ±1%
C469		018-11270-10	Cap 0603 2p7 50v NPO±0.1p
C470		018-16100-00	Cap 0603 100n 16v x7r + - 10%
C471		018-15100-00	Cap 0603 10n 50v X7r ±10%
C472		018-16100-00	Cap 0603 100n 16v x7r + - 10%
C473		018-16100-00	Cap 0603 100n 16v x7r + - 10%
C474		018-16100-00	Cap 0603 100n 16v x7r + - 10%
C476		018-11220-10	Cap 0603 2p2 50v NPO±0.1p
C477		018-11470-10	Cap 0603 4p7 50v NPO±0.1p
C480		018-13100-10	Cap 0603 100p 50v NPO±1%
C483		018-11220-10	Cap 0603 2p2 50v NPO±0.1p
C500		018-15470-00	Cap 0603 47n 16v X7r±10%
C501		018-16100-00	Cap 0603 100n 16v x7r + - 10%
C502		018-16100-00	Cap 0603 100n 16v x7r + - 10%
C503		018-16100-00	Cap 0603 100n 16v x7r + - 10%
C504		015-07470-10	Cap Cer 1206 4u7 X7r 16v
C505		015-27100-08	Cap Cer 0805 X7R 1uF 16V 10%
C506		018-16100-00	Cap 0603 100n 16v x7r + - 10%
C507		018-15100-00	Cap 0603 10n 50v X7r ±10%
C508		018-13150-00	Cap 0603 150p 50v NPO ±5%
C509		018-15100-00	Cap 0603 10n 50v X7r ±10%
C510		018-15100-00	Cap 0603 10n 50v X7r ±10%
C511		018-12390-10	Cap 0603 39p 50v NPO ±1%
C512		018-12120-10	Cap 0603 12p 50v NPO ±1%
C513		018-13150-00	Cap 0603 150p 50v NPO ±5%
C514		018-12470-10	Cap 0603 47p 50v NPO ±1%
C515		018-16100-00	Cap 0603 100n 16v x7r + - 10%
C516		018-16100-00	Cap 0603 100n 16v x7r + - 10%
C517		018-16100-00	Cap 0603 100n 16v x7r + - 10%
C518		018-12100-10	Cap 0603 10p 50v NPO±0.1
C519		018-13150-00	Cap 0603 150p 50v NPO ±5%
C520		018-52220-02	Cap 0603 22p 50v Ntc ±2% T2h
C521		018-16100-00	Cap 0603 100n 16v x7r + - 10%
C522		018-12270-10	Cap 0603 27p 50v NPO ±1%
C523		018-12270-10	Cap 0603 27p 50v NPO ±1%
C524		018-12150-10	Cap 0603 15p 50v NPO ±1%
C525		018-13150-00	Cap 0603 150p 50v NPO ±5%
C526		018-15100-00	Cap 0603 10n 50v X7r ±10%
C527		018-15330-00	Cap 0603 33n 50v X7r10%
C528		018-16100-00	Cap 0603 100n 16v x7r + - 10%
C529		018-15330-00	Cap 0603 33n 50v X7r10%
C530		018-15100-00	Cap 0603 10n 50v X7r ±10%
C531		015-07220-08	Cap Cer 1206 2u2 16v X7r
C532		018-12330-10	Cap 0603 33p 50v NPO ±1%
C533		018-16100-00	Cap 0603 100n 16v x7r + - 10%
C534		018-13330-00	Cap 0603 3

Parts List

Ref	Var	IPN	Description	Ref	Var	IPN	Description	Ref	Var	IPN	Description	Ref	Var	IPN	Description
C565		015-06100-01	Cap Cer 1206 100n 5% COG 25V	C728		031-16100-00	Cap 0402 100n 10V X5R +-10%	D200		001-10099-01	Diode BAV99w Dual Ss	IC900		002-10892-01	IC MAX892 3V3 8uMAX 250mA
C566		018-13150-00	Cap 0603 150p 50v NPO ±5%	C729		031-16100-00	Cap 0402 100n 10V X5R +-10%	D201		001-10099-01	Diode BAV99w Dual Ss	IF_QJ		319-01215-01	Shld Frt End T/Orca
C567		018-12100-10	Cap 0603 10p 50v NPO±0.1	C730		031-16100-00	Cap 0402 100n 10V X5R +-10%	D400		001-10099-01	Diode BAV99w Dual Ss	L102		057-11220-02	Ind 0603 Blm11a221 Emi Supr
C568		018-13150-00	Cap 0603 150p 50v NPO ±5%	C731		031-16100-00	Cap 0402 100n 10V X5R +-10%	D401		001-10057-02	Diode SMD BBY57-02v Vcap Sc-79	L103		057-11220-02	Ind 0603 Blm11a221 Emi Supr
C569		018-13150-00	Cap 0603 150p 50v NPO ±5%	C733		031-16100-00	Cap 0402 100n 10V X5R +-10%	D402		001-10057-02	Diode SMD BBY57-02v Vcap Sc-79	L104		057-11220-02	Ind 0603 Blm11a221 Emi Supr
C570		018-13150-00	Cap 0603 150p 50v NPO ±5%	C734		031-16100-00	Cap 0402 100n 10V X5R +-10%	D403		001-10057-02	Diode SMD BBY57-02v Vcap Sc-79	L105		059-15120-00	Ind SMD 0603hs 12nh 5%
C571		018-14470-00	Cap 0603 4n7 50v X7r±10%	C735		031-16100-00	Cap 0402 100n 10V X5R +-10%	D404		001-10057-02	Diode SMD BBY57-02v Vcap Sc-79	L106		059-15560-00	Ind SMD 0603hs 56nh 5%
C572		018-11680-10	Cap 0603 6p8 50v NPO±0.1p	C736		015-08220-10	Cap Cer 1210 22U 10% 16V X5R	D405		001-10015-00	Diode SMD BAT15-099R Sch	L110		057-00004-73	Ind Fxd 4.7nh +-5% 0603
C573		018-11560-10	Cap 0603 5p6 50v NPO±0.1p	C737		018-15100-00	Cap 0603 10n 50v X7r ±10%	D501		001-10015-30	Diode SMD Vcap BB153 SOD323	L111		057-10080-06	Ind Blm41-P800 1a 180hm 100MHz
C574		018-15100-00	Cap 0603 10n 50v X7r ±10%	C738		031-16100-00	Cap 0402 100n 10V X5R +-10%	D502		001-10005-35	Diode SMD BB535 Vcap SOD323	L112		059-15680-05	Ind SMD 0805cs 68nh 5%
C575		018-11120-10	Cap 0603 1p2 50v NPO±0.1p	C739		018-12560-10	Cap 0603 56p 50v NPO ±1%	D503		001-10099-01	Diode BAV99w Dual Ss	L115		057-10081-06	Ind 1806 Blm41p750s Emi Supr
C576		018-13150-00	Cap 0603 150p 50v NPO ±5%	C740		018-12560-10	Cap 0603 56p 50v NPO ±1%	D504		001-10005-35	Diode SMD BB535 Vcap SOD323	L116		052-57421-40	Coil A/W SMD 4t/2.1mm .57mm
C577		018-14470-00	Cap 0603 4n7 50v X7r±10%	C741		018-11470-10	Cap 0603 8p2 50v NPO±0.1p	D505		001-10005-35	Diode SMD BB535 Vcap SOD323	L122		052-57418-20	Coil A/W SMD 2t/1.8mm .57mm
C578		018-11100-10	Cap 0603 1p0 50v NPO±0.1p	C742		018-13150-00	Cap 0603 150p 50v NPO ±5%	D506		001-10005-35	Diode SMD BB535 Vcap SOD323	L123		059-16390-05	Ind SMD 0805cs 390nh 5%
C580		018-16100-00	Cap 0603 100n 16v x7r + - 10%	C743		031-16100-00	Cap 0402 100n 10V X5R +-10%	D507		001-10005-35	Diode SMD BB535 Vcap SOD323	L125		059-15270-00	Ind SMD 0603hs 27nh 5%
C582		018-13150-00	Cap 0603 150p 50v NPO ±5%	C745		018-12100-10	Cap 0603 10p 50v NPO±0.1	D508		001-10005-35	Diode SMD BB535 Vcap SOD323	L126		052-57420-40	Coil A/W SMD 4t/2.0mm .57mm
C583		018-11390-10	Cap 0603 3p9 50v NPO±0.1p	C746		031-16100-00	Cap 0402 100n 10V X5R +-10%	D509		001-10005-35	Diode SMD BB535 Vcap SOD323	L127		059-15330-00	Ind Fxd 0603hs 33nh 5%
C584		018-11220-10	Cap 0603 2p2 50v NPO±0.1p	C747		031-16100-00	Cap 0402 100n 10V X5R +-10%	D510		001-10005-35	Diode SMD BB535 Vcap SOD323	L130		052-57421-30	Coil A/W SMD 3t/2.1mm .57mm
C585		015-07470-10	Cap Cer 1206 4u7 X7r 16v	C748		031-16100-00	Cap 0402 100n 10V X5R +-10%	D511		001-10005-35	Diode SMD BB535 Vcap SOD323	L131		052-57320-30	Coil A/W SMD 3t/2mm .57mm
C586		018-11390-10	Cap 0603 3p9 50v NPO±0.1p	C752		031-16100-00	Cap 0402 100n 10V X5R +-10%	D512		001-10070-01	Diode BAV70W Dual Ss SOT323	L132		052-57421-30	Coil A/W SMD 3t/2.1mm .57mm
C587		018-12100-10	Cap 0603 10p 50v NPO±0.1	C753		031-16100-00	Cap 0402 100n 10V X5R +-10%	D600		001-10070-01	Diode BAV70W Dual Ss SOT323	L200		057-10010-20	Ind 0603 Blm11-B102s 0.1a
C588		018-13100-10	Cap 0603 100p 50v NPO±1%	C754		031-16100-00	Cap 0402 100n 10V X5R +-10%	D601		001-10005-30	Diode SMD MBR0530 Sch 0a5/30v	L400		057-00015-00	Ind Fxd 15nh +-5% 1206 Mur
C589		018-11180-10	Cap 0603 1p8 50v NPO±0.1p	C756		031-16100-00	Cap 0402 100n 10V X5R +-10%	D602		001-10070-01	Diode BAV70W Dual Ss SOT323	L401		057-10010-20	Ind 0603 Blm11-B102s 0.1a
C590		018-15100-00	Cap 0603 10n 50v X7r ±10%	C758		031-16100-00	Cap 0402 100n 10V X5R +-10%	D700		001-10002-02	Diode SMD BB202 VCAP SOD523	L402		059-75180-55	Ind SMD 0805 18nh 5% Swi C
C600		015-26220-08	Cap 0805 220n 10% X7r 16v	C762		031-16100-00	Cap 0402 100n 10V X5R +-10%	D900		001-10099-01	Diode BAV99w Dual Ss	L403		059-17180-10	Ind SMD 1008cs 1.8uh 5%
C601		018-14100-00	Cap 0603 1n 50v X7r ±10%	C763		031-16100-00	Cap 0402 100n 10V X5R +-10%	D904		001-10084-33	Diode SMD BZX84C3V3 Zen SOT23	L404		057-10010-20	Ind 0603 Blm11-B102s 0.1a
C602		015-07470-10	Cap Cer 1206 4u7 X7r 16v	C764		031-16100-00	Cap 0402 100n 10V X5R +-10%	D906		001-10070-01	Diode BAV70W Dual Ss SOT323	L405		057-10010-20	Ind 0603 Blm11-B102s 0.1a
C603		018-16100-00	Cap 0603 100n 16v x7r + - 10%	C766		031-16100-00	Cap 0402 100n 10V X5R +-10%	D907		001-10099-01	Diode BAV99w Dual Ss	L406		059-16120-10	Ind SMD 1008cs 120nh 5%
C604		018-16100-00	Cap 0603 100n 16v x7r + - 10%	C773		031-16100-00	Cap 0402 100n 10V X5R +-10%	D919		001-10084-33	Diode SMD BZX84C3V3 Zen SOT23	L407		057-00015-00	Ind Fxd 15nh +-5% 1206 Mur
C606		018-15100-00	Cap 0603 10n 50v X7r ±10%	C774		031-16100-00	Cap 0402 100n 10V X5R +-10%	DIG_BOT		319-01004-00	Shld SMD 44.2x21.2x3.5	L408		057-10010-20	Ind 0603 Blm11-B102s 0.1a
C607		015-07470-10	Cap Cer 1206 4u7 X7r 16v	C776		031-16100-00	Cap 0402 100n 10V X5R +-10%	DIG_TOP		319-01004-00	Shld SMD 44.2x21.2x3.5	L409		057-00015-00	Ind Fxd 15nh +-5% 1206 Mur
C608		018-15100-00	Cap 0603 10n 50v X7r ±10%	C777		031-16100-00	Cap 0402 100n 10V X5R +-10%	DS900		008-10000-20	LED SMD Red/Grn Sml-020	L411		056-76820-50	Ind SMD 0805 820nh 10% Ebl
C609		015-07470-10	Cap Cer 1206 4u7 X7r 16v	C778		031-16100-00	Cap 0402 100n 10V X5R +-10%	E600		057-11220-02	Ind 0603 Blm11a221 Emi Supr	L412		056-76820-50	Ind SMD 0805 820nh 10% Ebl
C610		015-07470-10	Cap Cer 1206 4u7 X7r 16v	C779		031-16100-00	Cap 0402 100n 10V X5R +-10%	E601		057-10600-05	Ind 0603 Blm11p600s .5a F/Bead	L414		057-10010-20	Ind 0603 Blm11-B102s 0.1a
C611		018-15100-00	Cap 0603 10n 50v X7r ±10%	C780		031-16100-00	Cap 0402 100n 10V X5R +-10%	E602		057-10600-05	Ind 0603 Blm11p600s .5a F/Bead	L415		059-76560-85	Ind SMD 1008 560nh 5% Swi C
C612		015-07220-08	Cap Cer 1206 2u2 16v X7r	C781		031-16100-00	Cap 0402 100n 10V X5R +-10%	E603		057-10600-05	Ind 0603 Blm11p600s .5a F/Bead	L417		059-76560-85	Ind SMD 1008 560nh 5% Swi C
C613		018-16100-00	Cap 0603 100n 16v x7r + - 10%	C782		031-16100-00	Cap 0402 100n 10V X5R +-10%	E900		057-10010-20	Ind 0603 Blm11-B102s 0.1a	L419		057-10010-20	Ind 0603 Blm11-B102s 0.1a
C614		018-16100-00	Cap 0603 100n 16v x7r + - 10%	C783		031-16100-00	Cap 0402 100n 10V X5R +-10%	E901		057-10010-20	Ind 0603 Blm11-B102s 0.1a	L420		059-15560-00	Ind SMD 0603hs 56nh 5%
C615		018-16100-00	Cap 0603 100n 16v x7r + - 10%	C786		031-16100-00	Cap 0402 100n 10V X5R +-10%	E902		057-10010-20	Ind 0603 Blm11-B102s 0.1a	L421		059-15120-00	Ind SMD 0603hs 12nh 5%
C616		015-08220-10	Cap Cer 1210 22U 10% 16V X5R	C787		031-16100-00	Cap 0402 100n 10V X5R +-10%	E903		057-11220-02	Ind 0603 Blm11a221 Emi Supr	L422		059-15470-00	Ind SMD 0603hs 47nh 5%
C617		018-15100-00	Cap 0603 10n 50v X7r ±10%	C788		031-16100-00	Cap 0402 100n 10V X5R +-10%	E904		057-11220-02	Ind 0603 Blm11a221 Emi Supr	L500		059-17470-15	Ind SMD 1008cs 4.7uh 2%
C618		031-16100-00	Cap 0402 100n 10V X5R +-10%	C789		031-16100-00	Cap 0402 100n 10V X5R +-10%	EMERG		232-00010-32	Sw Tact Nonlatch Skqtlia Pcb	L501		159-77220-35	Ind SMD 0603 2.2uh 10% Smi F
C619		015-07220-08	Cap Cer 1206 2u2 16v X7r	C791		031-16100-00	Cap 0402 100n 10V X5R +-10%	FCL		319-01213-01	Shld Rx T/Orca	L502		050-10000-40	Coil SMD DC/DC Convrt
C620		015-07220-08	Cap Cer 1206 2u2 16v X7r	C900		018-16100-00	Cap 0603 100n 16v x7r + - 10%	FUNC_1		232-00010-32	Sw Tact Nonlatch Skqtlia Pcb	L503		059-17470-15	Ind SMD 1008cs 4.7uh 2%
C621		018-16100-00	Cap 0603 100n 16v x7r + - 10%	C901		018-13470-00	Cap 0603 470p 50v X7r±10%	FUNC_2		232-00010-32	Sw Tact Nonlatch Skqtlia Pcb	L504		059-17470-15	Ind SMD 1008cs 4.7uh 2%
C622		015-08220-10	Cap Cer 1210 22U 10% 16V X5R	C902		018-13470-00	Cap 0603 470p 50v X7r±10%	IC100		002-10139-16	IC MBC13916 Cascade Buffer	L505		059-17820-10	Ind SMD 1008ls 8.2uh 5%
C623		018-15100-00	Cap 0603 10n 50v X7r ±10%	C903		018-13470-00	Cap 0603 470p 50v X7r±10%	IC101		002-19240-00	IC Quad OPAMP TS924 TSSOP14	L506		057-10010-20	Ind 0603 Blm11-B102s 0.1a
C624		031-16100-00	Cap 0402 100n 10V X5R +-10%	C904		018-13470-00	Cap 0603 470p 50v X7r±10%	IC200		002-10854-10	IC TDA8541T 1w Audio Amp	L509		059-16330-05	Ind SMD 0805cs 330nh 5%
C625		031-16100-00	Cap 0402 100n 10V X5R +-10%	C905		018-14100-00	Cap 0603 1n 50v X7r ±10%	IC201		002-10324-00	IC LMV324 Quad Op Amp TSSOP14	L510		052-57423-40	Coil A/W SMD 4t/2.3mm .57mm
C626		031-16100-00	Cap 0402 100n 10V X5R +-10%	C906		018-14100-00	Cap 0603 1n 50v X7r ±10%	IC202		002-10003-21	IC SMD LMV321 Single Op Amp	L513		059-16330-05	Ind SMD 0805cs 330nh 5%
C627		018-12220-10	Cap 0603 22p 50v NPO ±1%	C907		015-26220-08	Cap 0805 220n 10% X7r 16v	IC204		002-10065-21	IC AD6521ACA Dual Codec	L514		059-16330-05	Ind SMD 0805cs 330nh 5%
C628		031-16100-00	Cap 0402 100n 10V X5R +-10%	C908		018-16100-00	Cap 0603 100n 16v x7r + - 10%	IC205		002-10045-50	IC SMD AK4550VT Codec Tssop-16	L515		059-16330-05	Ind SMD 0805cs 330nh 5%
C629		018-15470-00	Cap 0603 47n 16v X7r±10%	C909		018-15100-00	Cap 0603 10n 50v X7r ±10%	IC207		002-10021-00	IC PHN210 Dual Nch Emi Fmt	L516		059-16330-05	Ind SMD 0805cs 330nh 5%
C630		018-13100-10	Cap 0603 100p 50v NPO±1%	C910		018-15100-00	Cap 0603 10n 50v X7r ±10%	IC400		002-10266-70	IC SMD RF2667 Quad Demod Q-Sop	L519		052-57421-40	Coil A/W SMD 4t/2.1mm .57mm
C631		015-08220-10	Cap Cer 1210 22U 10% 16V X5R	C911		018-15100-00	Cap 0603 10n 50v X7r ±10%	IC403		002-10160-10	IC SMD LMX1601 Dual Pll Tssop	L520		059-16330-05	Ind SMD 0805cs 330nh 5%
C633		018-13470-00	Cap 0603 470p 50v X7r±10%	C912		018-13470-00	Cap 0603 470p 50v X7r±10%	IC404		002-10139-16	IC MBC13916 Cascade Buffer	L522		059-15150-00	Ind SMD 0603cs 15nh 5%
C634		018-16100-00	Cap 0603 100n 16v x7r + - 10%	C913		018-14100-00	Cap 0603 1n 50v X7r ±10%	IC500		002-74910-41	IC SMD 74V1G04 Inverter SC70	L523		059-15560-00	

Parts List

PCB IPN 220-01735-03

Ref	Var	IPN	Description	Ref	Var	IPN	Description	Ref	Var	IPN	Description	Ref	Var	IPN	Description
Q200		000-10084-72	Xstr BC847BS NPN Dual SOT363	R156		038-12100-10	Res 0603 10e 1%	R418		038-14680-10	Res 0603 6k8 1/10w 1%	R563		038-12330-00	Res 0603 33e 1/16w ± 5%
Q400		000-10085-70	Xstr BC856 PNP Dual SOT363	R157		036-12470-00	Res M/F SMD 0805 47e 5%	R419		038-12150-10	Res 0603 15e 1/16w ± 1%	R564		038-13330-00	Res 0603 330R 1/10w 5%
Q401		000-10036-00	Xstr SMD BFR360F NPN Lo Noise	R158		038-17100-10	Res 0603 1M 1%	R420		038-14100-00	Res 0603 1k0 1/10w 5%	R565		038-14180-00	Res 0603 1k8 1/10w 5%
Q402		000-10084-72	Xstr BC847BS NPN Dual SOT363	R159		038-16470-00	Res 0603 470k 1/10w 5%	R421		038-15100-10	Res 0603 10k 1/10w 1%	R566		038-15270-20	Res 0603 27k 0.5%
Q403		000-10001-71	Xstr RF BFS17W NPN SOT323UHF	R160		038-14470-00	Res 0603 4k7 1/10w 5%	R422		038-16100-10	Res 0603 100k 1/10w 1%	R567		038-12220-00	Res 0603 22e 1/16w ± 5%
Q404		000-10036-00	Xstr SMD BFR360F NPN Lo Noise	R161		038-15270-20	Res 0603 27k 0.5%	R423		038-16100-10	Res 0603 100k 1/10w 1%	R568		038-14330-00	Res 0603 3k3 1/10w 5%
Q405		000-10000-90	Xstr PUMD9 Dual NPN/PNP SOT363	R164		038-16120-10	Res 0603 120k 1%	R424		038-12470-00	Res 0603 47R 1/10w 5%	R569		038-16100-10	Res 0603 100k 1/10w 1%
Q500		000-10084-73	Xstr BC847BPNNPN/PNP SOT363	R165		038-15220-10	Res 0603 22k 1%	R425		038-14100-00	Res 0603 1k0 1/10w 5%	R570		038-15270-20	Res 0603 27k 0.5%
Q501		000-10001-71	Xstr RF BFS17W NPN SOT323UHF	R166		038-15470-10	Res 0603 47k 1/10w 1%	R428		038-13390-10	Res 0603 390R 1/10w 1%	R571		038-13390-10	Res 0603 390R 1/10w 1%
Q503		000-10001-71	Xstr RF BFS17W NPN SOT323UHF	R170		038-15470-10	Res 0603 47k 1/10w 1%	R429		038-14220-00	Res 0603 2k2 1/10w 5%	R572		038-12220-00	Res 0603 22e 1/16w ± 5%
Q504		000-10941-00	Xstr SMD PBR941 NPN SOT23	R171		038-13680-00	Res 0603 680R 1/10w 5%	R430		038-15390-10	Res 0603 39k2 1% WDS	R573		038-12330-00	Res 0603 33e 1/16w ± 5%
Q505		000-10084-72	Xstr BC847BS NPN Dual SOT363	R172		038-13680-00	Res 0603 680R 1/10w 5%	R433		038-14120-10	Res 0603 1k2 1/10w 1%	R574		038-14100-00	Res 0603 1k0 1/10w 5%
Q506		000-10085-70	Xstr BC856 PNP Dual SOT363	R173		038-13680-00	Res 0603 680R 1/10w 5%	R434		038-15270-20	Res 0603 27k 0.5%	R575		038-12220-00	Res 0603 22e 1/16w ± 5%
Q507		000-10084-72	Xstr BC847BS NPN Dual SOT363	R174		038-15470-10	Res 0603 47k 1/10w 1%	R435		038-13470-00	Res 0603 470R 1/10w 5%	R576		038-12220-00	Res 0603 22e 1/16w ± 5%
Q508		000-10084-72	Xstr BC847BS NPN Dual SOT363	R176		038-15470-10	Res 0603 47k 1/10w 1%	R436		038-13560-10	Res 0603 560R 1/10w 1%	R577		038-12220-00	Res 0603 22e 1/16w ± 5%
Q510		000-10941-00	Xstr SMD PBR941 NPN SOT23	R180		038-10000-00	Res 0603 Zero Ohm 1/16w ± 5%	R437		038-12100-10	Res 0603 10e 1%	R578		038-14100-00	Res 0603 1k0 1/10w 5%
Q511		000-10084-73	Xstr BC847BPNNPN/PNP SOT363	R181		038-17100-10	Res 0603 1M 1%	R438		038-13180-10	Res 0603 180R 1/10w 1%	R579		038-14470-00	Res 0603 4k7 1/10w 5%
Q513		000-10000-90	Xstr PUMD9 Dual NPN/PNP SOT363	R182		038-17100-10	Res 0603 1M 1%	R500		038-16100-10	Res 0603 100k 1/10w 1%	R580		038-12220-00	Res 0603 22e 1/16w ± 5%
Q514		000-10941-00	Xstr SMD PBR941 NPN SOT23	R194		038-11470-00	Res 0603 4e7 1/16W ± 5%	R501		038-12220-00	Res 0603 22e 1/16w ± 5%	R581		038-15150-10	Res 0603 15k 1% WDS
Q515		001-10099-01	Diode BAV99w Dual Ss	R197		036-11330-00	Res M/F SMD 0805 3e3 5%	R502		038-16100-10	Res 0603 100k 1/10w 1%	R582		038-15100-10	Res 0603 10k 1/10w 1%
Q516		000-10000-90	Xstr PUMD9 Dual NPN/PNP SOT363	R200		038-17100-10	Res 0603 1M 1%	R503		038-12220-00	Res 0603 22e 1/16w ± 5%	R583		038-12220-00	Res 0603 22e 1/16w ± 5%
Q517		000-10084-73	Xstr BC847BPNNPN/PNP SOT363	R201		038-17100-10	Res 0603 1M 1%	R504		038-15150-10	Res 0603 15k 1% WDS	R584		038-13330-00	Res 0603 330R 1/10w 5%
Q603		000-10084-73	Xstr BC847BPNNPN/PNP SOT363	R202		038-14150-00	Res 0603 1k5 1/10w 5%	R505		038-13100-10	Res 0603 100R 1/10w 1%	R585		038-12220-00	Res 0603 22e 1/16w ± 5%
Q604		000-10002-05	Xstr SMD BSH205 P Mos SOT23	R203		038-14150-00	Res 0603 1k5 1/10w 5%	R506		041-13820-10	Res 0402 820R 1% 100PPM	R586		038-15470-10	Res 0603 47k 1/10w 1%
Q605		000-10002-05	Xstr SMD BSH205 P Mos SOT23	R204		038-10000-00	Res 0603 Zero Ohm 1/16w ± 5%	R507		038-12470-00	Res 0603 47R 1/10w 5%	R587		038-12220-00	Res 0603 22e 1/16w ± 5%
Q606		000-10084-73	Xstr BC847BPNNPN/PNP SOT363	R207		038-14120-10	Res 0603 1k2 1/10w 1%	R508		038-14390-10	Res 0603 3k9 1/10w 1%	R588		038-12470-00	Res 0603 47R 1/10w 5%
Q700		000-10001-71	Xstr RF BFS17W NPN SOT323UHF	R208		038-14120-10	Res 0603 1k2 1/10w 1%	R509		038-12470-00	Res 0603 47R 1/10w 5%	R589		038-15470-10	Res 0603 47k 1/10w 1%
Q701		000-10002-01	Xstr Dual PNP PEMB2 SOT666	R209		038-14150-00	Res 0603 1k5 1/10w 5%	R510		038-13390-10	Res 0603 390R 1/10w 1%	R590		038-14470-00	Res 0603 4k7 1/10w 5%
Q702		000-10002-01	Xstr Dual PNP PEMB2 SOT666	R212		038-10000-00	Res 0603 Zero Ohm 1/16w ± 5%	R511		038-16100-10	Res 0603 100k 1/10w 1%	R591		038-14220-00	Res 0603 2k2 1/10w 5%
Q900		000-10085-70	Xstr BC856 PNP Dual SOT363	R214		038-14100-00	Res 0603 1k0 1/10w 5%	R512		038-12180-00	Res 0603 18e 1/16w ± 5%	R592		038-14470-00	Res 0603 4k7 1/10w 5%
Q904		000-10085-70	Xstr BC856 PNP Dual SOT363	R219		038-15100-10	Res 0603 10k 1/10w 1%	R514		038-15100-10	Res 0603 10k 1/10w 1%	R593		038-15100-10	Res 0603 10k 1/10w 1%
Q905		000-10000-90	Xstr PUMD9 Dual NPN/PNP SOT363	R221		038-16180-00	Res 0603 180k 1/10w 5%	R515		038-15100-10	Res 0603 10k 1/10w 1%	R596		038-14100-00	Res 0603 1k0 1/10w 5%
Q906		000-10000-90	Xstr PUMD9 Dual NPN/PNP SOT363	R222		038-16100-10	Res 0603 100k 1/10w 1%	R516		038-12470-00	Res 0603 47R 1/10w 5%	R597		038-10000-00	Res 0603 Zero Ohm 1/16w ± 5%
Q907		000-10085-70	Xstr BC856 PNP Dual SOT363	R223		038-14680-10	Res 0603 6k8 1/10w 1%	R517		038-15180-00	Res 0603 18k 1/10w 5%	R598		038-14270-00	Res 0603 2k7 1/10w 5%
Q910		000-10009-00	Xstr Dual NFET/NPN UMF9N SC88	R224		038-15150-10	Res 0603 15k 1% WDS	R518		038-15100-10	Res 0603 10k 1/10w 1%	R599		038-13100-10	Res 0603 100R 1/10w 1%
R100		036-12100-10	Res M/F SMD 0805 10e 1%	R226		038-14220-00	Res 0603 2k2 1/10w 5%	R519		038-14100-00	Res 0603 1k0 1/10w 5%	R606		038-16100-10	Res 0603 100k 1/10w 1%
R103		038-12470-00	Res 0603 47R 1/10w 5%	R229		038-15470-10	Res 0603 47k 1/10w 1%	R520		038-12470-00	Res 0603 47R 1/10w 5%	R608		038-16270-10	Res 0603 270k 1%
R104		038-13470-00	Res 0603 470R 1/10w 5%	R232		038-15470-10	Res 0603 47k 1/10w 1%	R521		038-15100-10	Res 0603 10k 1/10w 1%	R609		038-16100-10	Res 0603 100k 1/10w 1%
R105		038-13470-00	Res 0603 470R 1/10w 5%	R238		038-14120-10	Res 0603 1k2 1/10w 1%	R522		038-12560-00	Res 0603 56R 1/10w 5%	R610		038-14100-00	Res 0603 1k0 1/10w 5%
R106		036-12270-00	Res M/F SMD 0805 27e 5%	R239		038-16100-10	Res 0603 100k 1/10w 1%	R523		038-16100-10	Res 0603 100k 1/10w 1%	R615		038-16100-10	Res 0603 100k 1/10w 1%
R107		038-13150-00	Res 0603 150R 1/10w 5%	R240		038-16120-10	Res 0603 120k 1%	R524		038-15560-10	Res 0603 56k 1%	R616		038-15470-10	Res 0603 47k 1/10w 1%
R108		038-12390-10	Res 0603 390R 1/10w 1%	R241		038-14470-00	Res 0603 4k7 1/10w 5%	R525		038-12470-00	Res 0603 47R 1/10w 5%	R617		038-16120-10	Res 0603 120k 1%
R109		038-13150-00	Res 0603 150R 1/10w 5%	R242		038-14100-00	Res 0603 1k0 1/10w 5%	R526		038-14100-00	Res 0603 1k0 1/10w 5%	R618		038-16105-10	Res 0603 105k 1/10w 1%
R110		038-11470-00	Res 0603 4e7 1/16W ± 5%	R245		038-15100-10	Res 0603 10k 1/10w 1%	R527		038-15330-10	Res 0603 33k 1%	R620		041-14220-10	Res 0402 2k2 1%
R111		038-14470-00	Res 0603 4k7 1/10w 5%	R246		038-15100-10	Res 0603 10k 1/10w 1%	R528		038-13470-00	Res 0603 470R 1/10w 5%	R621		041-14220-10	Res 0402 2k2 1%
R112		038-15100-10	Res 0603 10k 1/10w 1%	R247		038-16100-10	Res 0603 100k 1/10w 1%	R529		038-16100-10	Res 0603 100k 1/10w 1%	R622		036-11470-00	Res M/F SMD 0805 4e7 5%
R113		038-13470-00	Res 0603 470R 1/10w 5%	R252		038-15470-10	Res 0603 47k 1/10w 1%	R530		038-13100-10	Res 0603 100R 1/10w 1%	R623		036-11470-00	Res M/F SMD 0805 4e7 5%
R114		038-13470-00	Res 0603 470R 1/10w 5%	R253		038-15470-10	Res 0603 47k 1/10w 1%	R531		041-13820-10	Res 0402 820R 1% 100PPM	R625		038-16100-10	Res 0603 100k 1/10w 1%
R115		038-11680-00	Res 0603 6E8 1/16W ± 5%	R254		038-15470-10	Res 0603 47k 1/10w 1%	R532		038-14100-00	Res 0603 1k0 1/10w 5%	R626		038-15820-10	Res 0603 82k 1%
R118		038-15390-10	Res 0603 39k2 1% WDS	R255		038-16100-10	Res 0603 100k 1/10w 1%	R533		038-12220-00	Res 0603 22e 1/16w ± 5%	R627		038-15820-10	Res 0603 82k 1%
R120		038-12470-00	Res 0603 47R 1/10w 5%	R256		038-15220-10	Res 0603 22k 1%	R534		038-15100-10	Res 0603 10k 1/10w 1%	R628		038-16100-10	Res 0603 100k 1/10w 1%
R121		036-12150-10	Res M/F SMD 0805 15e 1%	R259		038-15100-10	Res 0603 10k 1/10w 1%	R535		038-15100-10	Res 0603 10k 1/10w 1%	R630		036-10000-00	Res M/F SMD 0805 0e 0.125w
R122		036-11330-00	Res M/F SMD 0805 3e3 5%	R260		038-15820-10	Res 0603 82k 1%	R536		038-16100-10	Res 0603 100k 1/10w 1%	R631		038-16100-10	Res 0603 100k 1/10w 1%
R123		038-16470-00	Res 0603 470k 1/10w 5%	R261		038-14220-00	Res 0603 2k2 1/10w 5%	R537		038-16105-10	Res 0603 105k 1/10w 1%	R633		038-15100-10	Res 0603 10k 1/10w 1%
R124		036-11330-00	Res M/F SMD 0805 3e3 5%	R262		038-14220-00	Res 0603 2k2 1/10w 5%	R538		038-16100-10	Res 0603 100k 1/10w 1%	R634		038-15100-10	Res 0603 10k 1/10w 1%
R126		038-11470-00	Res 0603 4e7 1/16W ± 5%	R263		038-15470-10	Res 0603 47k 1/10w 1%	R539		038-15100-10	Res 0603 10k 1/10w 1%	R635		038-15470-10	Res 0603 47k 1/10w 1%
R128		038-15560-10	Res 0603 56k 1%	R264		038-16150-10	Res 0603 150k 1%	R540		038-12470-00	Res 0603 47R 1/10w 5%	R637		038-13560-10	Res 0603 560R 1/10w 1%
R129		038-15330-10	Res 0603 33k 1%	R265		038-15220-10	Res 0603 22k 1%	R541		038-13560-10	Res 0603 560R 1/10w 1%	R700		038-14330-00	Res 0603 3k3 1/10w 5%

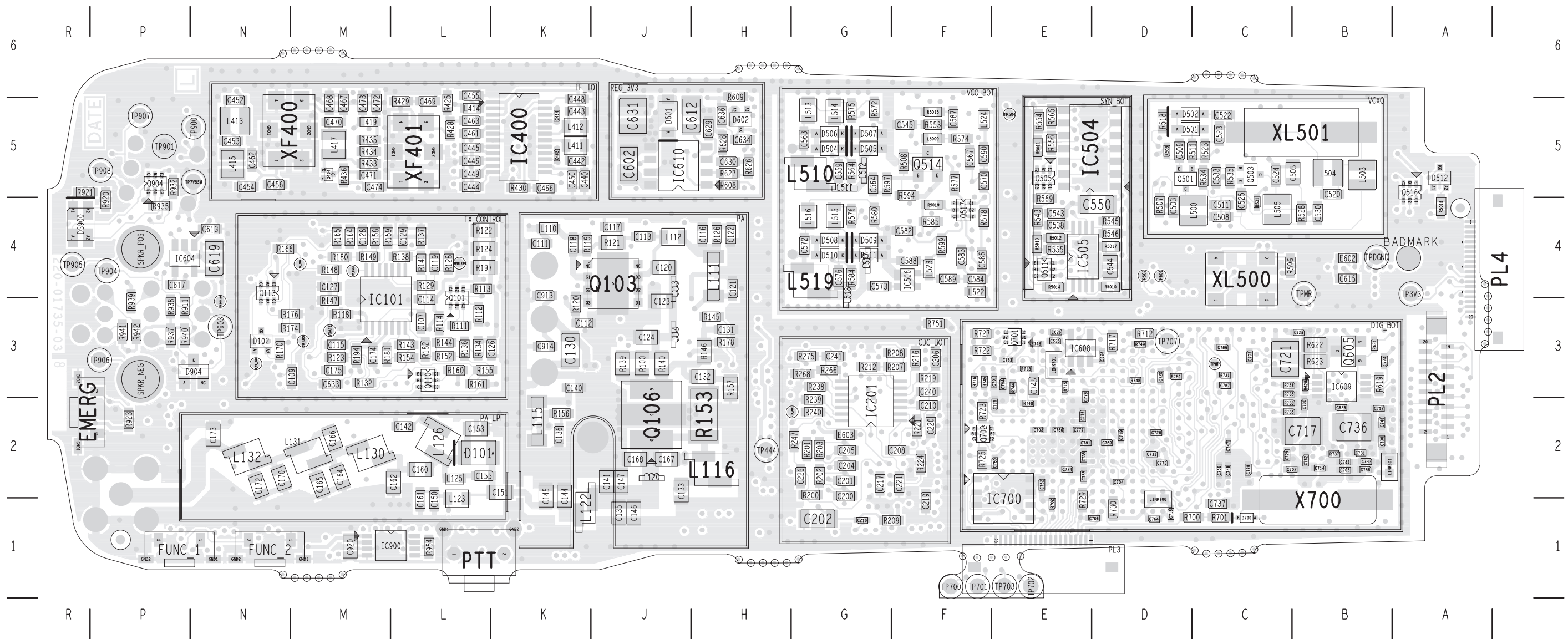
Parts List

Ref	Var	IPN	Description	Ref	Var	IPN	Description
R723		038-15470-10	Res 0603 47k 1/10w 1%	R5010		038-15100-10	Res 0603 10k 1/10w 1%
R725		038-15470-10	Res 0603 47k 1/10w 1%	R5011		038-15220-10	Res 0603 22k 1%
R727		038-15470-10	Res 0603 47k 1/10w 1%	R5012		038-14220-00	Res 0603 2k2 1/10w 5%
R729		038-15100-10	Res 0603 10k 1/10w 1%	R5014		038-15100-10	Res 0603 10k 1/10w 1%
R730		038-15100-10	Res 0603 10k 1/10w 1%	R5015		038-12560-00	Res 0603 56R 1/10w 5%
R731		041-14220-10	Res 0402 2k2 1%	R5016		038-14560-00	Res 0603 5k6 1/10w 5%
R732		038-16150-10	Res 0603 150k 1%	R5017		038-15220-10	Res 0603 22k 1%
R733		038-16180-00	Res 0603 180k 1/10w 5%	R5018		038-13100-10	Res 0603 100R 1/10w 1%
R735		041-14220-10	Res 0402 2k2 1%	R5019		038-14100-00	Res 0603 1k0 1/10w 5%
R736		041-14220-10	Res 0402 2k2 1%	REG_1V8		319-00098-00	Shld SMD 12.45x 8.85x3
R737		041-14220-10	Res 0402 2k2 1%	REG_3V3		319-01002-00	Shld SMD 15.5x11.7x3.5
R738		041-14220-10	Res 0402 2k2 1%	REG_5V		319-01002-00	Shld SMD 15.5x11.7x3.5
R740		041-12220-10	Res 0402 22e 1%	RX_FE		319-00099-00	Shld SMD 27.15x18.6x3.4
R741		041-12220-10	Res 0402 22e 1%	SPKR_POS		356-01070-00	Spring Spkr Cntct Probe
R742		041-14220-10	Res 0402 2k2 1%	SPKR_NEG		356-01070-00	Spring Spkr Cntct Probe
R743		041-14220-10	Res 0402 2k2 1%	SYN_BOT		319-01205-00	Shld Top Side VCO T/Orca
R744		041-14220-10	Res 0402 2k2 1%	SYN_TOP		319-01208-02	Shld Synth/If T/Orca
R745		041-14220-10	Res 0402 2k2 1%	T400		050-10061-70	Bal Mxr SMD 617db-1018
R746		041-14220-10	Res 0402 2k2 1%	T401		050-10061-70	Bal Mxr SMD 617db-1018
R747		041-14220-10	Res 0402 2k2 1%	TX_CONTRO		319-00099-00	Shld SMD 27.15x18.6x3.4
R748		041-12220-10	Res 0402 22e 1%	VCO2		319-01205-00	Shld Top Side VCO T/Orca
R749		041-12220-10	Res 0402 22e 1%	VCO_BOT		319-01206-01	Shld Bttm Side VCO T/Orca
R750		041-12220-10	Res 0402 22e 1%	VCXO		319-01001-00	Shld SMD 24.4x14.35x4.6
R751		038-10000-00	Res 0603 Zero Ohm 1/16w ± 5%	X700		274-10245-00	XTAL 24M576 HC49/SML 10PPM
R752		038-10000-00	Res 0603 Zero Ohm 1/16w ± 5%	XF400		276-10000-18	Ftr Xtal 45.1m 12k B/W -E12ab
R754		041-14220-10	Res 0402 2k2 1%	XF401		276-10000-13	Ftr Xtal 45.1m 15k B/W
R755		041-14220-10	Res 0402 2k2 1%	XL500		539-10011-00	Vctcxo 13.0MHz +-1.5ppm -30+80
R756		041-12220-10	Res 0402 22e 1%	XL501		274-10022-05	XTAL 13M0133 HC49/SML 30PPM
R757		041-12220-10	Res 0402 22e 1%				
R758		041-14220-10	Res 0402 2k2 1%				
R759		041-14220-10	Res 0402 2k2 1%				
R900		038-14390-10	Res 0603 3k9 1/10w 1%				
R901		038-15100-10	Res 0603 10k 1/10w 1%				
R902		038-15180-00	Res 0603 18k 1/10w 5%				
R903		038-15470-10	Res 0603 47k 1/10w 1%				
R904		038-16100-10	Res 0603 100k 1/10w 1%				
R905		038-15470-10	Res 0603 47k 1/10w 1%				
R906		038-14470-00	Res 0603 4k7 1/10w 5%				
R907		041-13820-10	Res 0402 820R 1% 100PPM				
R908		038-15470-10	Res 0603 47k 1/10w 1%				
R909		041-14220-10	Res 0402 2k2 1%				
R910		041-14220-10	Res 0402 2k2 1%				
R911		038-12470-00	Res 0603 47R 1/10w 5%				
R912		041-14220-10	Res 0402 2k2 1%				
R913		041-14220-10	Res 0402 2k2 1%				
R914		038-15470-10	Res 0603 47k 1/10w 1%				
R915		038-15470-10	Res 0603 47k 1/10w 1%				
R916		041-14220-10	Res 0402 2k2 1%				
R917		041-14220-10	Res 0402 2k2 1%				
R918		041-14220-10	Res 0402 2k2 1%				
R919		041-14220-10	Res 0402 2k2 1%				
R920		038-13270-10	Res 0603 270R 1/10w 1%				
R921		038-13100-00	Res 0603 100R 1/10w 5%				
R922		038-15470-10	Res 0603 47k 1/10w 1%				
R923		038-15470-10	Res 0603 47k 1/10w 1%				
R924		038-15470-10	Res 0603 47k 1/10w 1%				
R925		038-15470-10	Res 0603 47k 1/10w 1%				
R930		038-13100-10	Res 0603 100R 1/10w 1%				
R931		038-15470-10	Res 0603 47k 1/10w 1%				
R932		038-15220-10	Res 0603 22k 1%				
R933		038-13120-00	Res 0603 120R 1/10w 5%				
R934		038-13120-00	Res 0603 120R 1/10w 5%				
R935		038-15220-10	Res 0603 22k 1%				
R936		041-14220-10	Res 0402 2k2 1%				
R937		038-15470-10	Res 0603 47k 1/10w 1%				
R938		038-15470-10	Res 0603 47k 1/10w 1%				
R939		038-15470-10	Res 0603 47k 1/10w 1%				
R940		038-15470-10	Res 0603 47k 1/10w 1%				
R941		038-15470-10	Res 0603 47k 1/10w 1%				
R942		038-15470-10	Res 0603 47k 1/10w 1%				
R943		038-16100-10	Res 0603 100k 1/10w 1%				
R945		041-13820-10	Res 0402 820R 1% 100PPM				
R946		041-13820-10	Res 0402 820R 1% 100PPM				
R950		038-10000-00	Res 0603 Zero Ohm 1/16w ± 5%				
R952		038-14100-00	Res 0603 1k0 1/10w 5%				
R953		041-14220-10	Res 0402 2k2 1%				
R954		038-15180-00	Res 0603 18k 1/10w 5%				

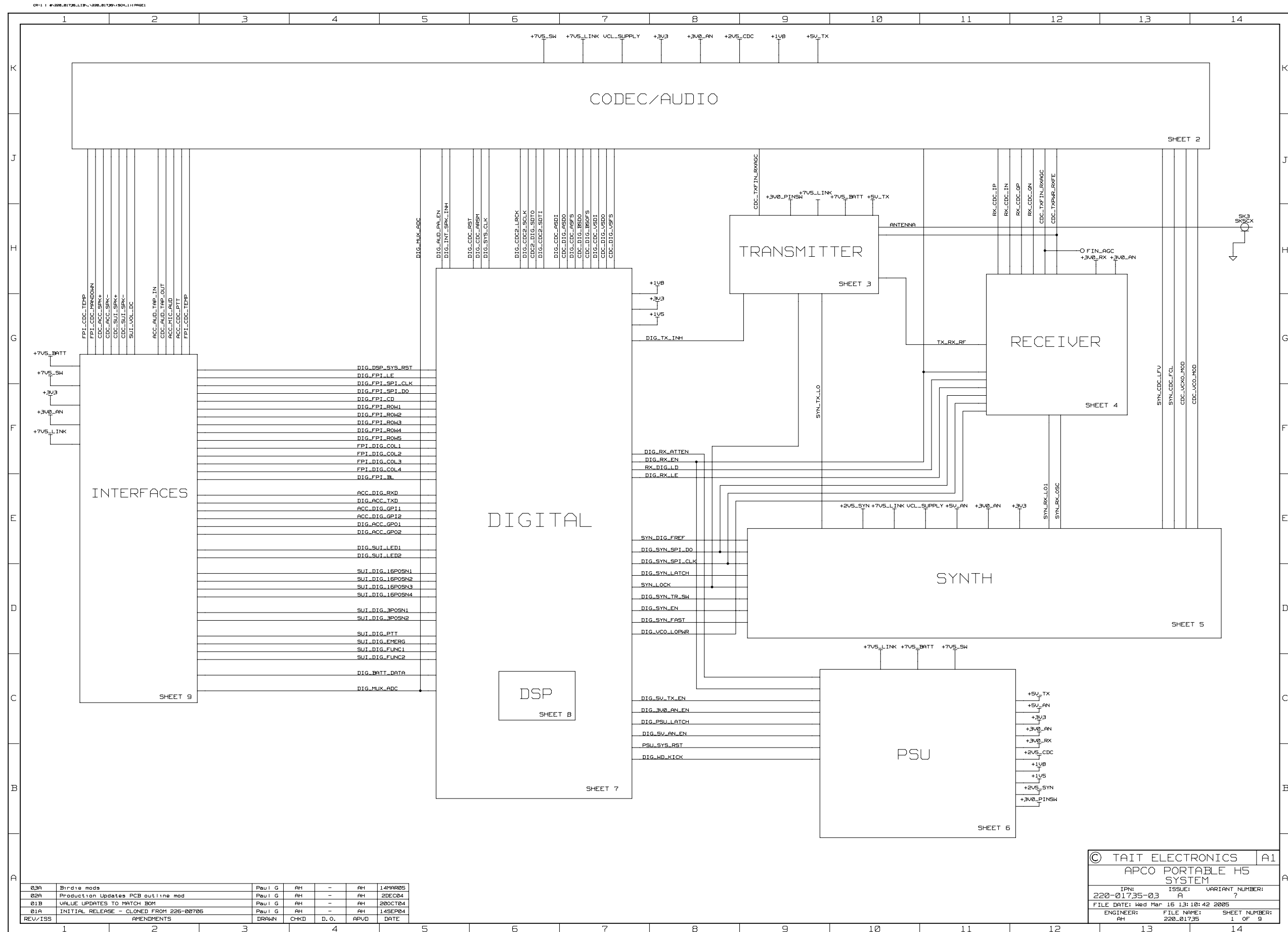
Grid Reference Index

PCB IPN 220-01735-03

Ref	PCB	Circuit	Ref	PCB	Circuit	Ref	PCB	Circuit	Ref	PCB	Circuit	Ref	PCB	Circuit	Ref	PCB	Circuit	Ref	PCB	Circuit	Ref	PCB	Circuit	Ref	PCB	Circuit	Ref	PCB	Circuit																																																																																																																																																																																																																																																																																																																																																																																																																																																																																																																																																																																																																																																																																																																																																																																																																																																																																																																																																																																																																																																																																																																																																																																																																																																																																																																																																																																																																																																																																											
BATT_DATA	1:K4	9-D11	C212	1:M2	2-D2	C451	1:M5	4-G10	C551	1:F4	5-J8	C702	2:C2	9-F3	C927	1:A2	9-F9	IC403	1:L5	4-C4	L415	2:N5	4-G11	L417	2:M5	4-G13	L419	2:M5	4-J14	L420	1:M5	4-H10	IC501	1:D5	5-H4	L421	1:M5	4-H10	IC502	1:C5	5-F4	L422	1:M5	4-H8	L5000	2:F5	5-C8	L500	2:C4	5-E2	IC503	1:E4	5-H7	L501	1:D4	5-H2	IC504	2:E5	5-F10	L502	1:B5	5-B2	L503	2:B5	5-E3	L504	2:B5	5-D4	L505	2:C4	5-E4	IC505	2:E4	5-D7	L506	1:E5	5-J7	L509	1:G5	5-D9	L510	2:G5	5-D9	L511	2:G5	5-D10	IC506	2:F4	5-B13	L512	2:G5	5-D10	IC600	1:H2	6-G3	L513	2:G5	5-D10	IC601	1:E5	6-F3	L514	2:G5	5-D11	IC604	2:P4	6-G7	L515	2:G4	5-D11	IC605	1:G2	6-E7	L516	2:G4	5-D12	IC606	1:B4	6-C8	L517	2:G4	5-D12	IC608	2:E3	6-D7	L518	2:G4	5-D12	IC609	2:B3	6-A7	L519	2:G4	5-D12	IC610	2:J5	6-C3	L520	1:G4	5-D13	IC700	2:E1	7-D1	L522	2:F4	5-B14	IC701	1:E2	7-H5	L523	2:F4	5-C13	L524	2:F5	5-A9	L600	1:J5	6-D4	L601	1:A4	6-C8	L602	1:H5	6-E2	L603	1:M3	6-E9	IC702	1:B1	7-G4	L700	1:B2	7-G3	LINK600	1:A4	6-C9	LINK602	1:H3	6-D6	LINK601	2:B2	6-C10	LINK603	1:H3	6-D5	LINK701	2:E3	7-J4	LINK700	2:D1	7-J4	IF_IQ	2:L5	4-A8	LO_2ND	1:K5	4-A8	MIXER	1:M5	4-A6	MUX_ADC	1:A3	9-B2	PA	2:J3	3-B6	PA_BIAS	2:M4	3-J10	PA_EX	1:J4	3-B1	PA_LPF	2:M2	3-B13	PL1	1:M2	9-F2	PL2	2:A3	9-G2	PL3	2:E1	7-C1	PL4	2:<A4	7-H14	DIG_BOT	2:D2	7-A1	DIG_TOP	1:D2	7-A1	DS900	2:R4	9-J12	D_TX_INH	2:N3	3-H13	E600	1:D5	6-F2	E601	1:J5	6-E3	E602	2:B4	6-C7	E603	2:G2	6-E8	E904	1:A3	9-K9	EMERG	2:R2	9-G12	FCL	1:C5	5-A9	FIN_AGC	2:G2	1-H12	FUNC_1	2:P1	9-G12	FUNC_2	2:N1	9-F12	IC100	1:J3	3-C3	IC101	2:M3	3-H7	E604	1:J5	6-E3	E605	2:B4	6-C7	E903	1:M1	9-J3	E904	1:A3	9-K9	IC200	1:L2	2-D3	IC201	2:G2	2-F11	C913	2:K4	9-C12	C914	2:K3	9-C12	C915	1:A3	9-J9	C916	1:A3	9-H9	C917	1:A3	9-H9	C918	1:A3	9-H9	C919	1:A3	9-H9	C920	2:M1	9-K4	C921	1:A2	9-G9	C922	1:A2	9-G9	C923	1:A2	9-F9	C924	1:A3	9-J9	C925	1:A2	9-J9	C926	1:A3	9-G9	D201	1:H2	2-B5	D400	1:L3	4-F1	D401	1:L4	4-F2	D402	1:M3	4-F6	D403	1:M4	4-F7	D404	1:K5	4-C6	D405	1:N5	4-G9	D501	2:D5	5-D3	D502	2:D5	5-D3	D503	1:A5	5-B4	D504	2:G5	5-D10	D505	2:G5	5-D10	D506	2:G5	5-D11	D507	2:G5	5-D11	D508	2:G4	5-D12	D509	2:G4	5-D12	D510	2:G4	5-D12	D511	2:G4	5-D12	D512	2:A5	5-B5	D600	1:H5	6-D2	D601	2:J5	6-C4	D602	2:H5	6-B1	D700	2:C1	7-F1	D900	1:P1	9-H4	D904	2:N3	9-H4	D906	1:N2	9-F5	D919	1:K2	9-D13	DIG_BOT	2:D2	7-A1	DIG_TOP	1:D2	7-A1	DS900	2:R4	9-J12	D_TX_INH	2:N3	3-H13	E600	1:D5	6-F2	E601	1:J5	6-E3	E602	2:B4	6-C7	E603	2:G2	6-E8	E904	1:A3	9-K9	EMERG	2:R2	9-G12	FCL	1:C5	5-A9	FIN_AGC	2:G2	1-H12	FUNC_1	2:P1	9-G12	FUNC_2	2:N1	9-F12	IC100	1:J3	3-C3	IC101	2:M3	3-H7	E604	1:J5	6-E3	E605	2:B4	6-C7	E903	1:M1	9-J3	E904	1:A3	9-K9	IC200	1:L2	2-D3	IC201	2:G2	2-F11	C913	2:K4	9-C12	C914	2:K3	9-C12	C915	1:A3	9-J9	C916	1:A3	9-H9	C917	1:A3	9-H9	C918	1:A3	9-H9	C919	1:A3	9-H9	C920	2:M1	9-K4	C921	1:A2	9-G9	C922	1:A2	9-G9	C923	1:A2	9-F9	C924	1:A3	9-J9	C925	1:A2	9-J9	C926	1:A3	9-G9	D201	1:H2	2-B5	D400	1:L3	4-F1	D401	1:L4	4-F2	D402	1:M3	4-F6	D403	1:M4	4-F7	D404	1:K5	4-C6	D405	1:N5	4-G9	D501	2:D5	5-D3	D502	2:D5	5-D3	D503	1:A5	5-B4	D504	2:G5	5-D10	D505	2:G5	5-D10	D506	2:G5	5-D11	D507	2:G5	5-D11	D508	2:G4	5-D12	D509	2:G4	5-D12	D510	2:G4	5-D12	D511	2:G4	5-D12	D512	2:A5	5-B5	D600	1:H5	6-D2	D601	2:J5	6-C4	D602	2:H5	6-B1	D700	2:C1	7-F1	D900	1:P1	9-H4	D904	2:N3	9-H4	D906	1:N2	9-F5	D919	1:K2	9-D13	DIG_BOT	2:D2	7-A1	DIG_TOP	1:D2	7-A1	DS900	2:R4	9-J12	D_TX_INH	2:N3	3-H13	E600	1:D5	6-F2	E601	1:J5	6-E3	E602	2:B4	6-C7	E603	2:G2	6-E8	E904	1:A3	9-K9	EMERG	2:R2	9-G12	FCL	1:C5	5-A9	FIN_AGC	2:G2	1-H12	FUNC_1	2:P1	9-G12	FUNC_2	2:N1	9-F12	IC100	1:J3	3-C3	IC101	2:M3	3-H7	E604	1:J5	6-E3	E605	2:B4	6-C7	E903	1:M1	9-J3	E904	1:A3	9-K9	IC200	1:L2	2-D3	IC201	2:G2	2-F11	C913	2:K4	9-C12	C914	2:K3	9-C12	C915	1:A3	9-J9	C916	1:A3	9-H9	C917	1:A3	9-H9	C918	1:A3	9-H9	C919	1:A3	9-H9	C920	2:M1	9-K4	C921	1:A2	9-G9	C922	1:A2	9-G9	C923	1:A2	9-F9	C924	1:A3	9-J9	C925	1:A2	9-J9	C926	1:A3	9-G9	D201	1:H2	2-B5	D400	1:L3	4-F1	D401	1:L4	4-F2	D402	1:M3	4-F6	D403	1:M4	4-F7	D404	1:K5	4-C6	D405	1:N5	4-G9	D501	2:D5	5-D3	D502	2:D5	5-D3	D503	1:A5	5-B4	D504	2:G5	5-D10	D505	2:G5	5-D10	D506	2:G5	5-D11	D507	2:G5	5-D11	D508	2:G4	5-D12	D509	2:G4	5-D12	D510	2:G4	5-D12	D511	2:G4	5-D12	D512	2:A5	5-B5	D600	1:H5	6-D2	D601	2:J5	6-C4	D602	2:H5	6-B1	D700	2:C1	7-F1	D900	1:P1	9-H4	D904	2:N3	9-H4	D906	1:N2	9-F5	D919	1:K2	9-D13	DIG_BOT	2:D2	7-A1	DIG_TOP	1:D2	7-A1	DS900	2:R4	9-J12	D_TX_INH	2:N3	3-H13	E600	1:D5	6-F2	E601	1:J5	6-E3	E602	2:B4	6-C7	E603	2:G2	6-E8	E904	1:A3	9-K9	EMERG	2:R2	9-G12	FCL	1:C5	5-A9	FIN_AGC	2:G2	1-H12	FUNC_1	2:P1	9-G12	FUNC_2	2:N1	9-F12	IC100	1:J3	3-C3	IC101	2:M3	3-H7	E604	1:J5	6-E3	E605	2:B4	6-C7	E903	1:M1	9-J3	E904	1:A3	9-K9	IC200	1:L2	2-D3	IC201	2:G2	2-F11	C913	2:K4	9-C12	C914	2:K3	9-C12	C915	1:A3	9-J9	C916	1:A3	9-H9	C917	1:A3	9-H9	C918	1:A3	9-H9	C919	1:A3	9-H9	C920	2:M1	9-K4	C921	1:A2	9-G9	C922	1:A2	9-G9	C923	1:A2	9-F9	C924	1:A3	9-J9	C925	1:A2	9-J9	C926	1:A3	9-G9	D201	1:H2	2-B5	D400	1:L3	4-F1	D401	1:L4	4-F2	D402	1:M3	4-F6	D403	1:M4	4-F7	D404	1:K5	4-C6	D405	1:N5	4-G9	D501	2:D5	5-D3	D502	2:D5	5-D3	D503	1:A5	5-B4	D504	2:G5	5-D10	D505	2:G5	5-D10	D506	2:G5	5-D11	D507	2:G5	5-D11	D508	2:G4	5-D12	D509	2:G4	5-D12	D510	2:G4	5-D12	D511	2:G4	5-D12	D512	2:A5	5-B5	D600	1:H5	6-D2	D601	2:J5	6-C4	D602	2:H5	6-B1	D700	2:C1	7-F1	D900	1:P1	9-H4	D904	2:N3	9-H4	D906	1:N2	9-F5	D919	1:K2	9-D13	DIG_BOT	2:D2	7-A1	DIG_TOP	1:D2	7-A1	DS900	2:R4	9-J12	D_TX_INH	2:N3	3-H13	E600	1:D5	6-F2	E601	1:J5	6-E3	E602	2:B4	6-C7	E603	2:G2	6-E8	E904	1:A3	9-K9	EMERG	2:R2	9-G12	FCL	1:C5	5-A9	FIN_AGC	2:G2	1-H12	FUNC_1	2:P1	9-G12	FUNC_2	2:N1	9-F12	IC100	1:J3	3-C3	IC101	2:M3	3-H7	E604	1:J5	6-E3	E605	2:B4	6-C7	E903	1:M1	9-J3	E904	1:A3	9-K9	IC200	1:L2	2-D3	IC201	2:G2	2-F11	C913	2:K4	9-C12	C914	2:K3	9-C12	C915	1:A3	9-J9	C916	1:A3	9-H9	C917	1:A3	9-H9	C918	1:A3	9-H9	C919	1:A3	9-H9	C920	2:M1	9-K4	C921	1:A2	9-G9	C922	1:A2	9-G9	C923	1:A2	9-F9	C924	1:A3	9-J9	C925	1:A2	9-J9	C926	1:A3	9-G9	D201	1:H2	2-B5	D400	1:L3	4-F1	D401	1:L4	4-F2	D402	1:M3	4-F6	D403	1:M4	4-F7	D404	1:K5	4-C6	D405	1:N5	4-G9	D501	2:D5	5-D3	D502	2:D5	5-D3	D503	1:A5	5-B4	D504	2:G5	5-D10	D505	2:G5	5-D10	D506	2:G5	5-D11	D507	2:G5	5-D11	D508	2:G4	5-D12	D509	2:G4	5-D12	D510	2:G4	5-D12	D511	2:G4	5-D12	D512	2:A5	5-B5	D600	1:H5	6-D2	D601	2:J5	6-C4	D602	2:H5	6-B1	D700	2:C1	7-F1	D900	1:P1	9-H4	D904	2:N3	9-H4	D906	1:N2	9-F5	D919	1:K2	9-D13	DIG_BOT	2:D2	7-A1	DIG_TOP	1:D2	7-A1	DS900	2:R4	9-J12	D_TX_INH	2:N3	3-H13	E600	1:D5	6-F2	E601	1:J5	6-E3	E602	2:B4	6-C7	E603	2:G2	6-E8	E904	1:A3	9-K9	EMERG	2:R2	9-G12	FCL	1:C5	5-A9	FIN_AGC	2:G2	1-H12	FUNC_1	2:P1	9-G12	FUNC_2	2:N1	9-F12	IC100	1:J3	3-C3	IC101	2:M3	3-H7	E604	1:J5	6-E3	E605	2:B4	6-C7	E903	1:M1	9-J3	E904	1:A3	9-K9	IC200	1:L2	2-D3	IC201	2:G2	2-F11	C913	2:K4	9-C12	C914	2:K3	9-C12	C915	1:A3	9-J9	C916	1:A3	9-H9	C917	1:A3	9-H9	C918	1:A3	9-H9	C919	1:A3	9-H9	C920	2:M1	9-K4	C921	1:A2	9-G9	C922	1:A2	9-G9	C923	1:A2	9-F9	C924	1:A3	9-J9	C925	1:A2	9-J9	C926	1:A3	9-G9	D201	1:H2	2-B5	D400	1:L3	4-F1	D401	1:L4	4-F2	D402	1:M3	4-F6	D403	1:M4	4-F7	D404	1:K5	4-C6	D405	1:N5	4-G9	D501	2:D5	5-D3	D502	2:D5	5-D3	D503	1:A5	5-B4	D504	2:G5	5-D10	D505	2:G5	5-D10	D506	2:G5	5-D11	D507	2:G5	5-D11	D508	2:G4	5-D12	D509	2:G4	5-D12	D510	2:G4	5-D12	D511	2:G4	5-D12	D512	2:A5	5-B5	D600	1:H5	6-D2	D601	2:J5	6-C4	D602	2:H5	6-B1	D700	2:C1	7-F1	D900	1:P1	9-H4	D904	2:N3	9-H4	D906	1:N2	9-F5	D919	1:K2	9-D13	DIG_BOT	2:D2	7-A1	DIG_TOP	1:D2	7-A1	DS900	2:R4	9-J12	D_TX_INH	2:N3	3-H13	E600	1:D5	6-F2	E601	1:J5	6-E3	E602	2:B4	6-C7	E603	2:G2	6-E8	E904	1:A3	9-K9	EMERG	2:R2	9-G12	FCL	1:C5	5-A9	FIN_AGC	2:G2	1-H12	FUNC_1	2:P1	9-G12	FUNC_2	2:N1	9-F12	IC100	1:J3	3-C3	IC101	2:M3	3-H7	E604	1:J5	6-E3	E605	2:B4	6-C7	E903	1:M1	9-J3	E904	1:A3	9-K9	IC200	1:L2	2-D3	IC201	2:G2	2-F11	C913	2:K4	9-C12	C914	2:K3	9-C12	C915	1:A3	9-J9	C916	1:A3	9-H9	C917	1:A3	9-H9	C918	1:A3	9-H9	C919	1:A3	9-H9	C920	2:M1	9-K4	C921	1:A2	9-G9	C922	1:A2	9-G9	C923	1:A2	9-F9	C924	1:A3	9-J9	C925

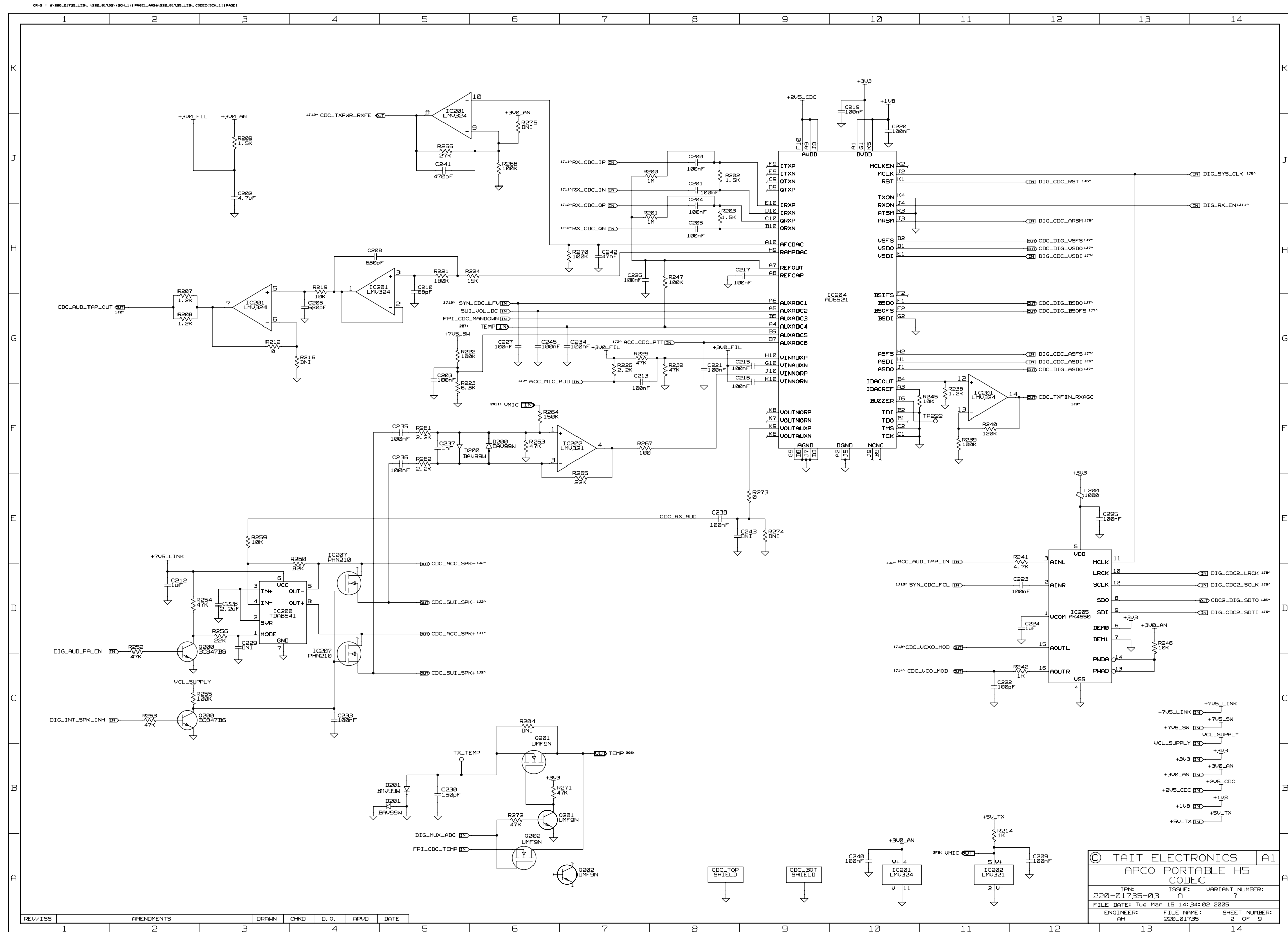


TAIT ELECTRONICS	IPN: 220-01735-03	ISS: A	DATE: 17Mar05	SCALE: NTS
APCO PORTABLE H5 LAYOUT-SECONDARY-SIDE				

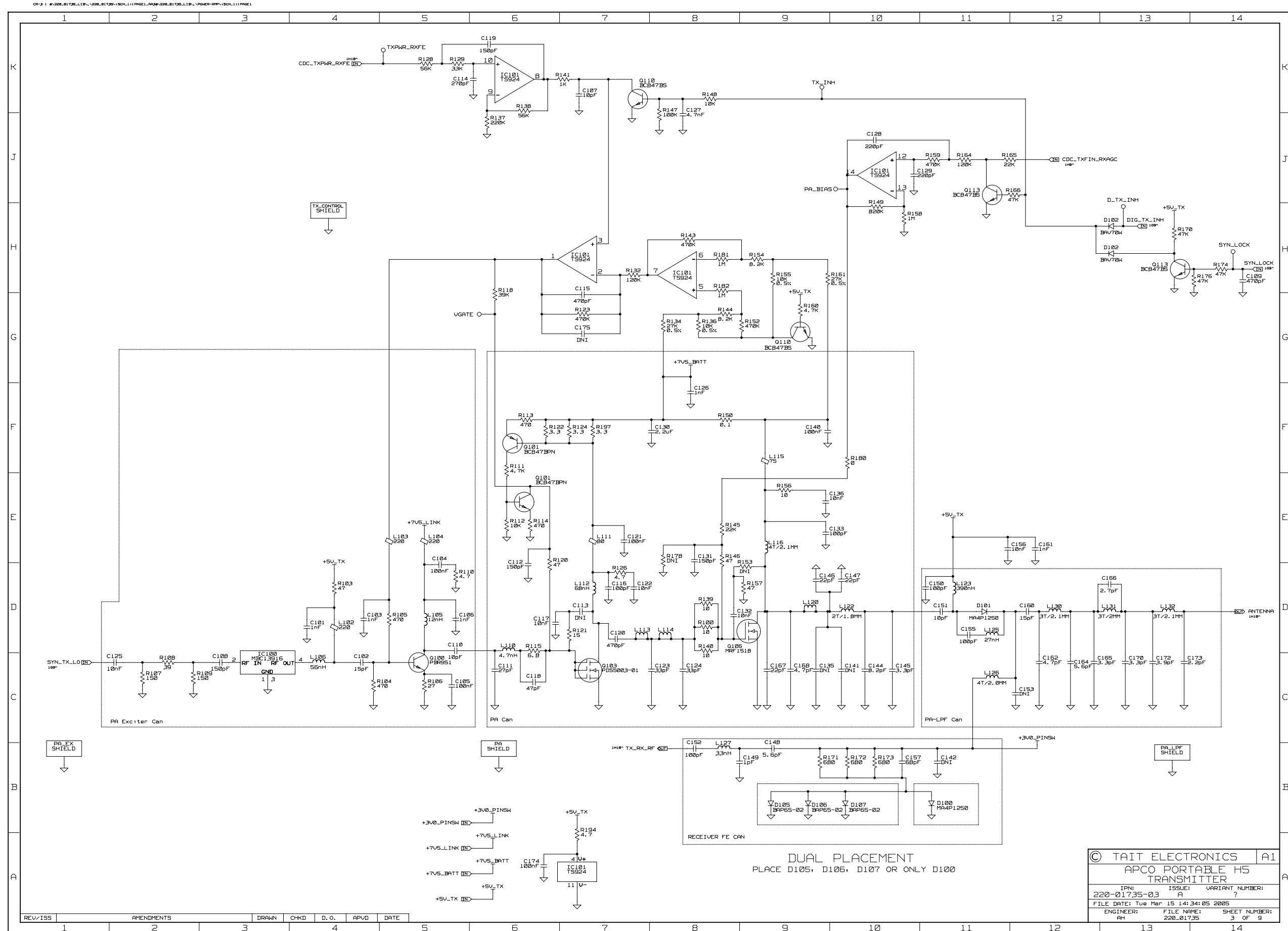


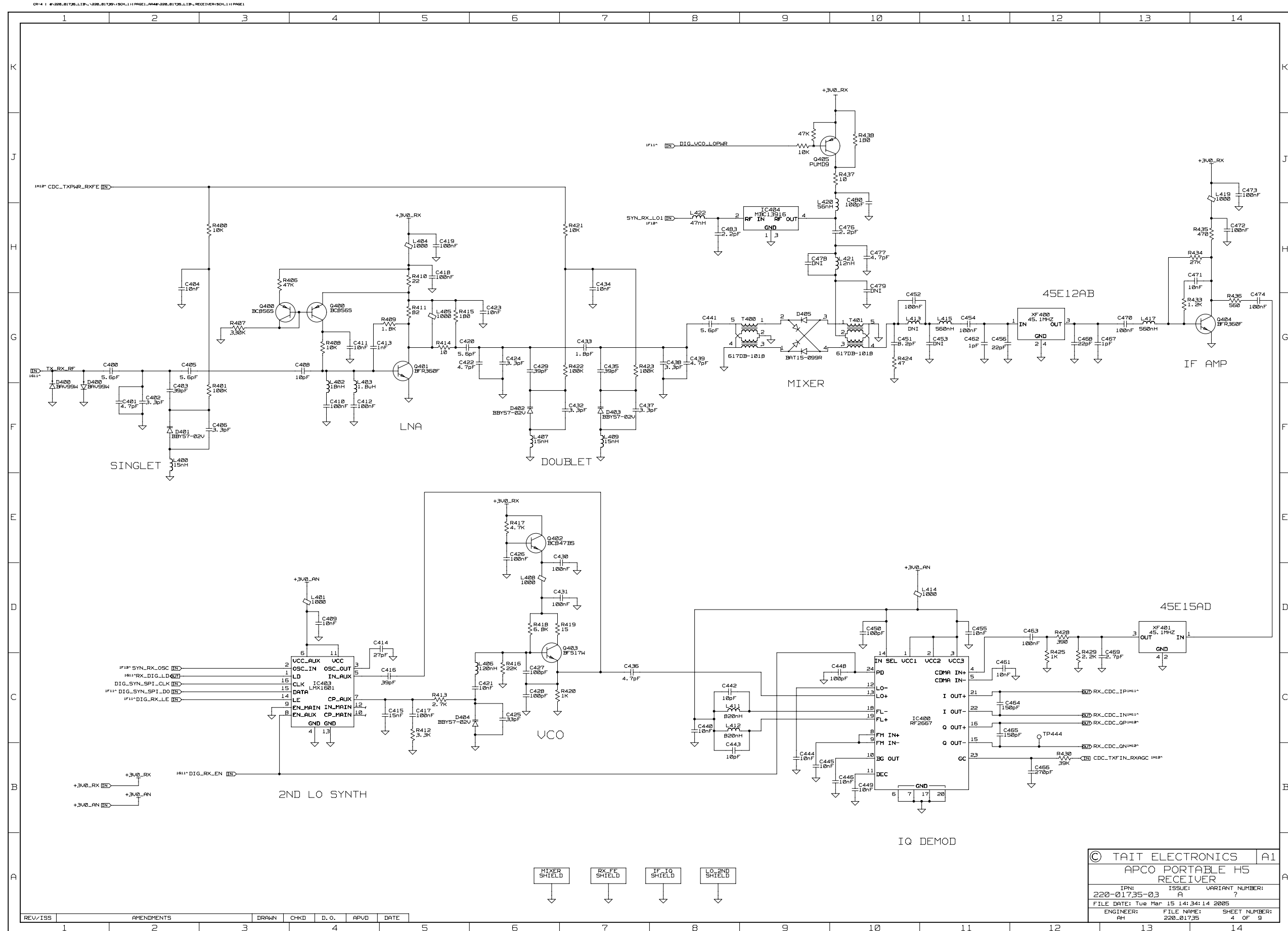
REV/ISS	AMENDMENTS	DRAWN	CHKD	D. O.	APVD	DATE
03A	Birdie mods	Paul G	AH	-	AH	14MAR05
02A	Production Updates PCB outline mod	Paul G	AH	-	AH	2DEC04
01B	VALUE UPDATES TO MATCH BOM	Paul G	AH	-	AH	20OCT04
01A	INITIAL RELEASE - CLONED FROM 226-00705	Paul G	AH	-	AH	14SEP04

© TAIT ELECTRONICS		A1
APCO PORTABLE H5 SYSTEM		
IPN: 220-01735-03	ISSUE: A	VARIANT NUMBER: ?
FILE DATE: Wed Mar 16 13:10:42 2005		
ENGINEER: AH	FILE NAME: 220_01735	SHEET NUMBER: 1 OF 9



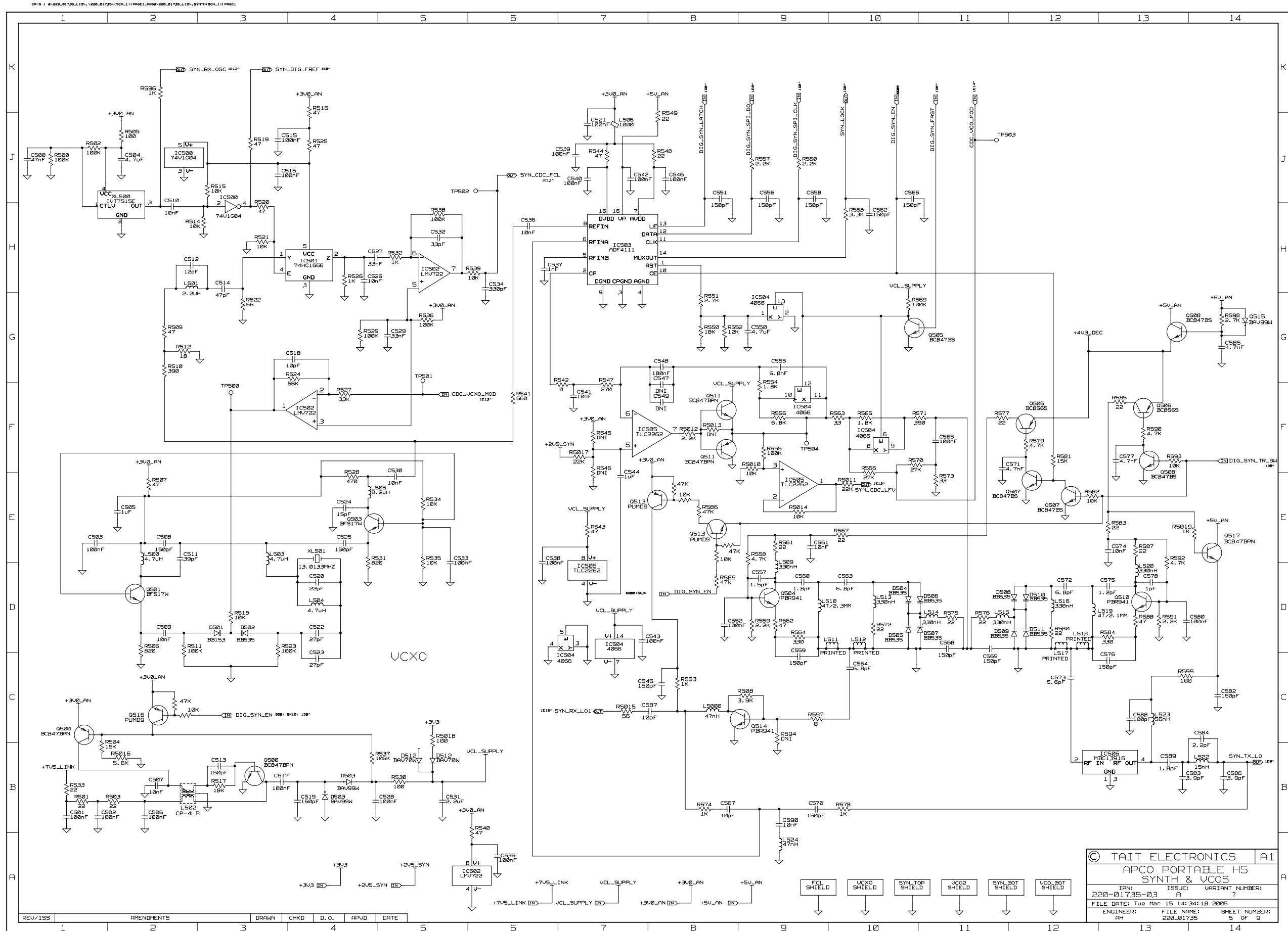
© TAIT ELECTRONICS A1
 APCO PORTABLE H5
 CODEC
 IPN: 220-01735-03 ISSUE: A VARIANT NUMBER: ?
 FILE DATE: Tue Mar 15 14:34:02 2005
 ENGINEER: AH FILE NAME: 220_01735 SHEET NUMBER: 2 OF 9



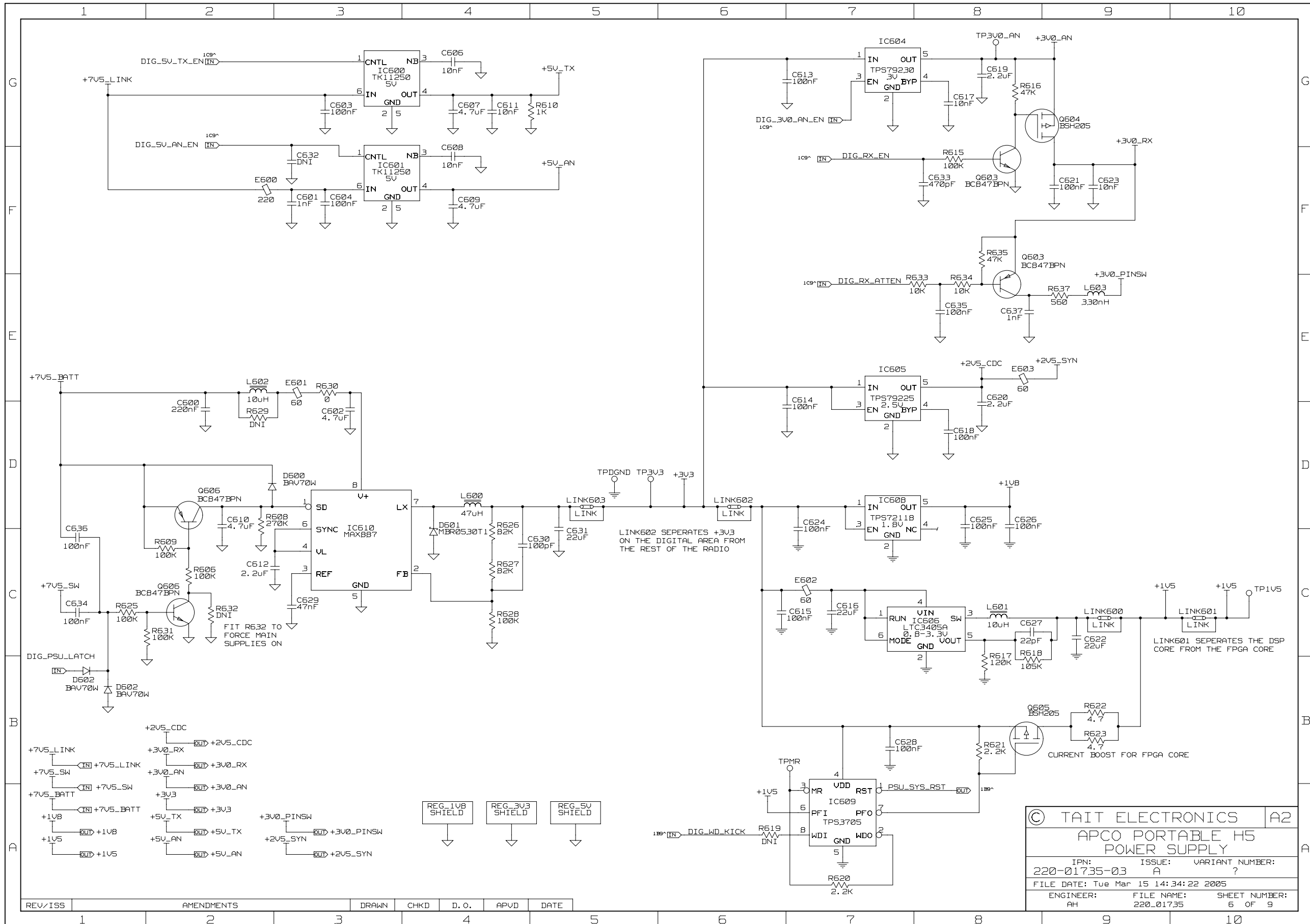


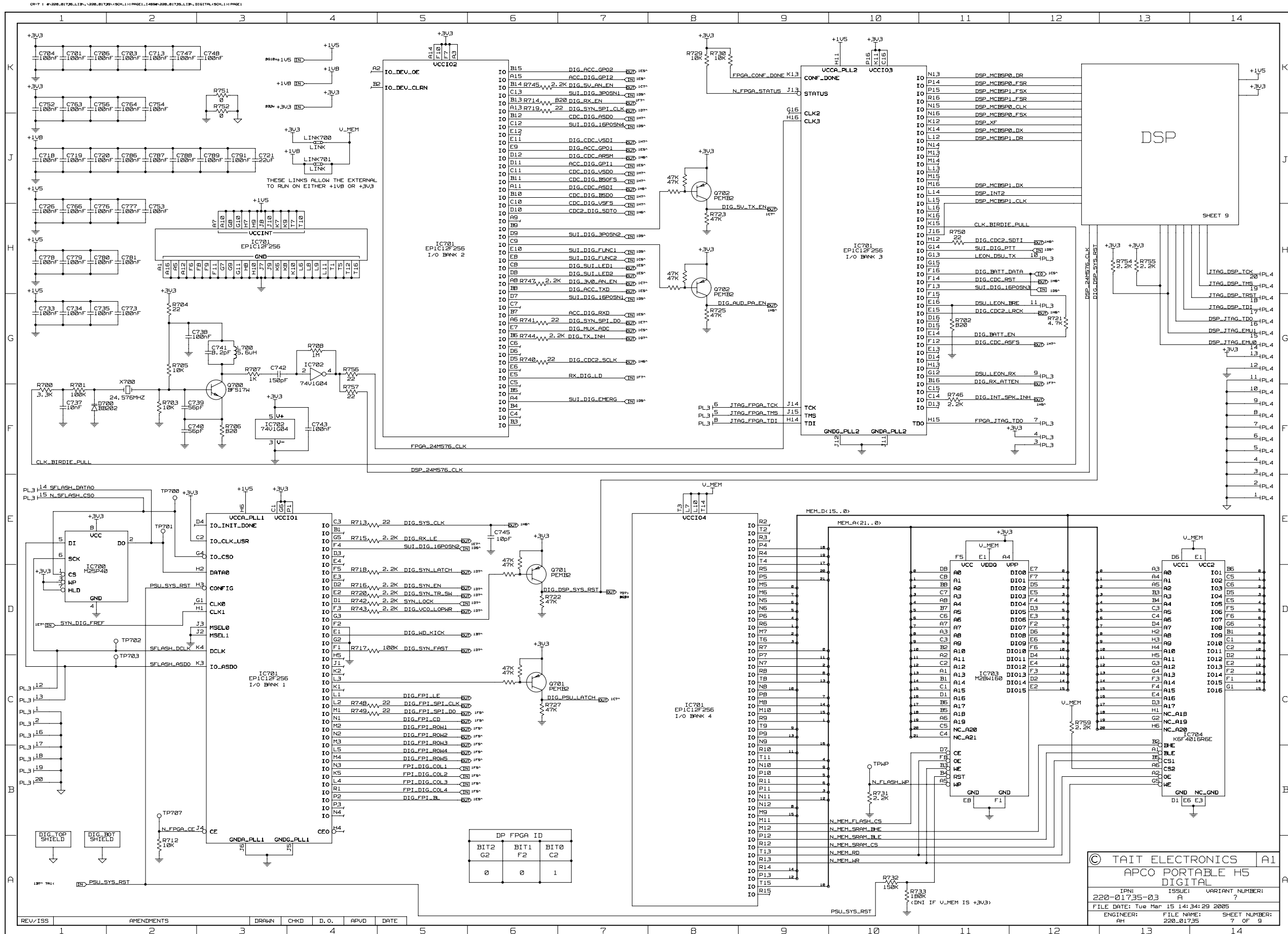
© TAIT ELECTRONICS		A1
APCO PORTABLE H5 RECEIVER		
IPN: 220-01735-03	ISSUE: A	VARIANT NUMBER: ?
FILE DATE: Tue Mar 15 14:34:14 2005		
ENGINEER: AH	FILE NAME: 220_01735	SHEET NUMBER: 4 OF 9

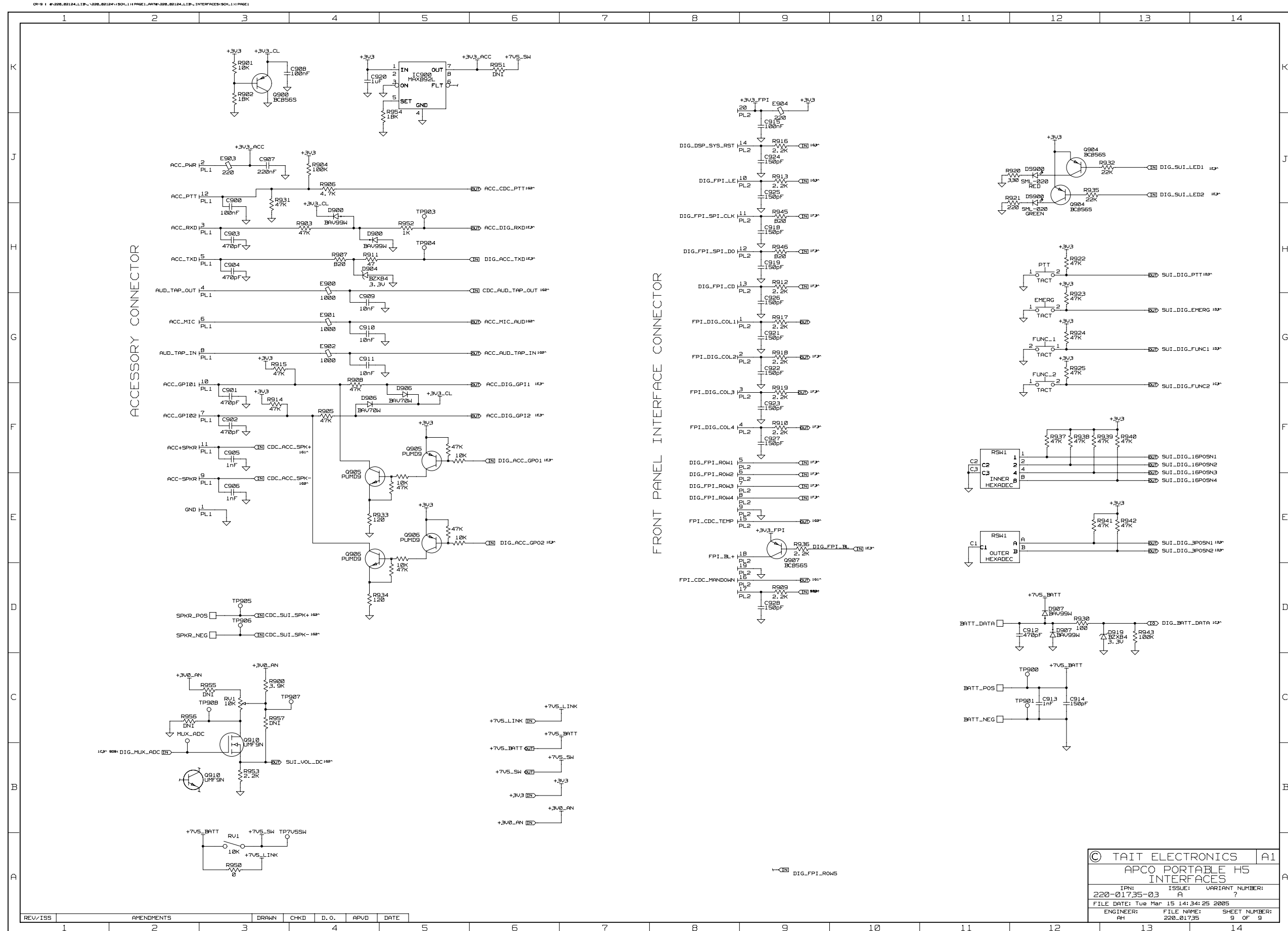
REV/ISS	AMENDMENTS	DRAWN	CHKD	D. O.	APVD	DATE
1						



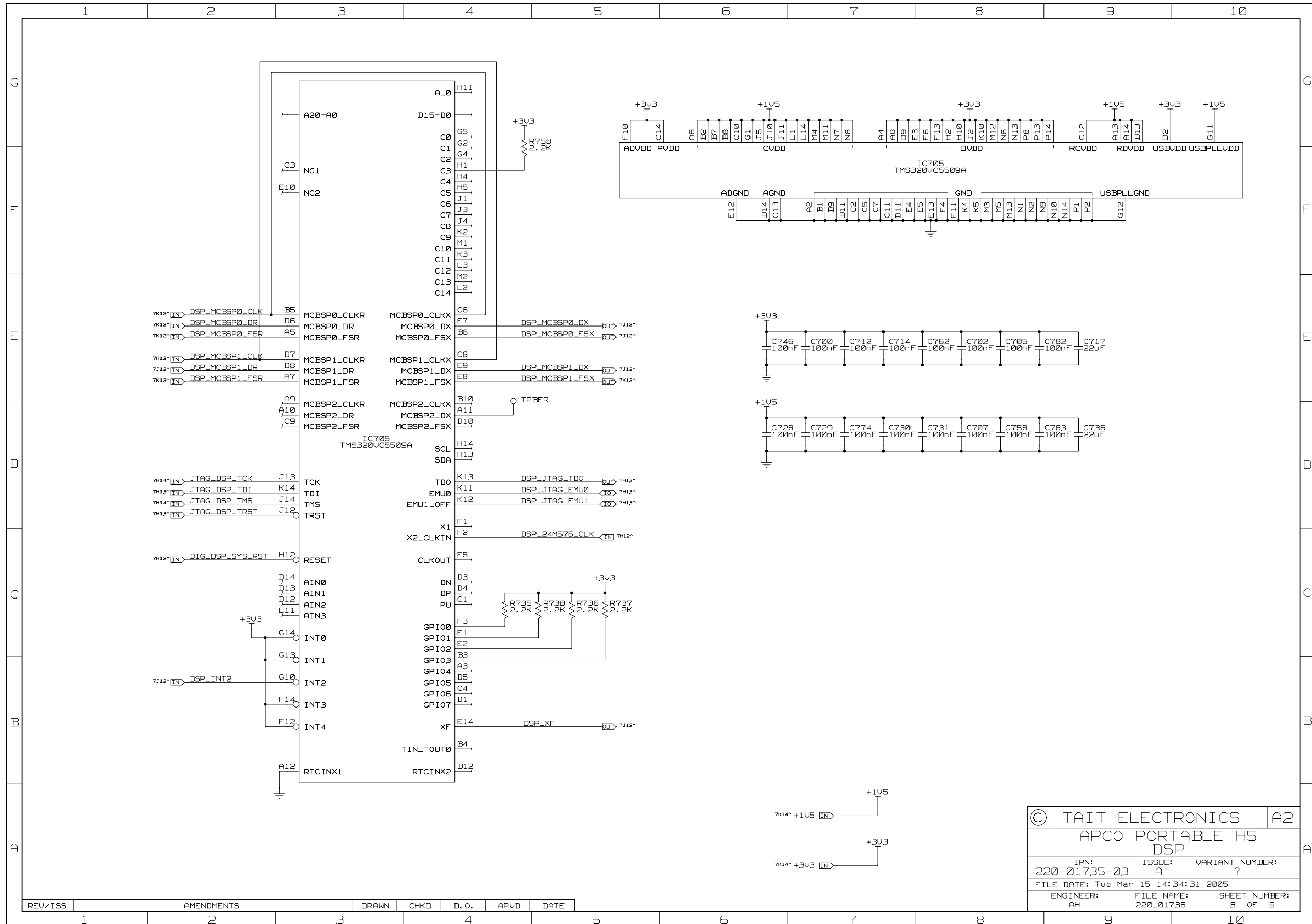
CR-6 : @220_01735_L1B\220_01735\SCH.1:PAGE1.A6@220_01735_L1B.PSU(SCH.1):PAGE1







CR-B : @220_01735_LTB\220_01735\SCH1\1469@220_01735_LTB_DIGITAL\SCH1\1157@220_01735_LTB_DSP\SCH1\PAGE1



© TAIT ELECTRONICS		A2
APCO PORTABLE H5 DSP		
IPN: 220-01735-03	ISSUE: A	VARIANT NUMBER: ?
FILE DATE: Tue Mar 15 14:34:31 2005		
ENGINEER: AH	FILE NAME: 220_01735	SHEET NUMBER: 8 OF 9

REV/ISS	AMENDMENTS	DRAWN	CHKD	D. O.	APVD	DATE
1						